



NDL Industries

APPLICATIONS

Commercial, Industrial, and Residential HVAC and Refrigeration

Flexible Gas Connectors

Innovative Gas Connector Products with High-Quality Performance





Flexible Gas Connectors

Table of Contents

Product Information	1
3/8" Gas Connectors	2 - 12
1/2" Gas Connectors	12 - 22
5/8" Gas Connectors	22 - 38
1" Gas Connectors	38 - 40
Brass Flare Fittings	40
Gas Shut Off Valves	40
One Piece Gas Valves	41



Explore our full line of high-quality HVAC-R and plumbing products.

ndlinc.com | 1-866-635-6888 | sales@ndlinc.com

@ndlindustries





Flexible Gas Connectors

Innovative Gas Connector Products with High-Quality Performance

- Connecting gas appliances (furnaces, water heaters, stoves, ovens, fireplaces) to gas source.
- Corrosion-resistant stainless steel 304 tubing and zinc-plated steel fittings provide 100% quality you can trust.
- Flexible to reduce labor costs.
- Corrosion and scaling resistant.
- Withstand 15 applications of 90° twists.
- Interchangeable fittings for any application.
- Safe-guard yellow epoxy coating provides extra protection from corrosion, chemical stains from common household products, and plumbing repair products. Optional gas shutoff valves available.

Certifications and Approvals

- ANSI Z21.24/CSA 6.10 – Connectors for Gas Appliances
- ANSI Z 21.69/CSA 6.16 – Movable Gas Appliances
- ANSI Z21.75/CSA 6.27 – Connectors for Outdoor Gas Appliances and Manufactured Homes
- B149.1 – Natural Gas and Propane Installation Code (CSA Group) Section 6.21
- Uniform Mechanical Code (UMC) Section 1313.0 Uniform Plumbing Code (UPC) Section 1212.0
- UL2200-2015: Stationary Engine Generator Assemblies Section 66B Vibration Test

Symbols

- MIP** Male iron pipe
- FIP** Female iron pipe
- OD** Outer diameter
- ID** Inner diameter
- SS** Stainless steel





Coated Stainless Steel Flexible Gas Connector 3/8" OD (1/4" ID) 3/8" FIP X 1/2" FIP Valve

PART #	OD - DESCRIPTION	BOX QTY	WT (LB)	WT (G)
G103-2235-12	3/8" OD (1/4" ID) 3/8" x 1/2" Coated (12") FIP x FIP Valve	25	0.588	266.8
G103-2235-18	3/8" OD (1/4" ID) 3/8" x 1/2" Coated (18") FIP x FIP Valve	25	0.640	290.2
G103-2235-24	3/8" OD (1/4" ID) 3/8" x 1/2" Coated (24") FIP x FIP Valve	25	0.691	313.5
G103-2235-30	3/8" OD (1/4" ID) 3/8" x 1/2" Coated (30") FIP x FIP Valve	25	0.743	336.8
G103-2235-36	3/8" OD (1/4" ID) 3/8" x 1/2" Coated (36") FIP x FIP Valve	25	0.794	360.1
G103-2235-48	3/8" OD (1/4" ID) 3/8" x 1/2" Coated (48") FIP x FIP Valve	25	0.897	406.8
G103-2235-60	3/8" OD (1/4" ID) 3/8" x 1/2" Coated (60") FIP x FIP Valve	12	1.000	453.4
G103-2235-72	3/8" OD (1/4" ID) 3/8" x 1/2" Coated (72") FIP x FIP Valve	12	1.102	500.0



Coated Stainless Steel Flexible Gas Connector 3/8" OD (1/4" ID) 3/8" MIP X 1/2" FIP Valve

PART #	OD - DESCRIPTION	BOX QTY	WT (LB)	WT (G)
G103-2135-12	3/8" OD (1/4" ID) 3/8" x 1/2" Coated (12") MIP x FIP Valve	25	0.604	273.9
G103-2135-18	3/8" OD (1/4" ID) 3/8" x 1/2" Coated (18") MIP x FIP Valve	25	0.655	297.2
G103-2135-24	3/8" OD (1/4" ID) 3/8" x 1/2" Coated (24") MIP x FIP Valve	25	0.707	320.5
G103-2135-30	3/8" OD (1/4" ID) 3/8" x 1/2" Coated (30") MIP x FIP Valve	25	0.758	343.8
G103-2135-36	3/8" OD (1/4" ID) 3/8" x 1/2" Coated (36") MIP x FIP Valve	25	0.809	367.1



Coated Stainless Steel Flexible Gas Connector 3/8" OD (1/4" ID) 3/8" MIP X 1/2" FIP Valve - *Continued*

PART #	OD - DESCRIPTION	BOX QTY	WT (LB)	WT (G)
G103-2135-48	3/8" OD (1/4" ID) 3/8" x 1/2" Coated (48") MIP x FIP Valve	25	0.912	413.8
G103-2135-60	3/8" OD (1/4" ID) 3/8" x 1/2" Coated (60") MIP x FIP Valve	12	1.015	460.4
G103-2135-72	3/8" OD (1/4" ID) 3/8" x 1/2" Coated (72") MIP x FIP Valve	12	1.118	507.0



Stainless Steel Flexible Gas Connectors 3/8" OD (1/4" ID) 3/8" FIP X 1/2" FIP Valve

PART #	OD - DESCRIPTION	BOX QTY	WT (LB)	WT (G)
G100-2235-12	3/8" OD (1/4" ID) 3/8" x 1/2" SS (12") FIP x FIP Valve	25	0.559	253.5
G100-2235-18	3/8" OD (1/4" ID) 3/8" x 1/2" SS (18") FIP x FIP Valve	25	0.599	271.7
G100-2235-24	3/8" OD (1/4" ID) 3/8" x 1/2" SS (24") FIP x FIP Valve	25	0.640	290.1
G100-2235-30	3/8" OD (1/4" ID) 3/8" x 1/2" SS (30") FIP x FIP Valve	25	0.680	308.4
G100-2235-36	3/8" OD (1/4" ID) 3/8" x 1/2" SS (36") FIP x FIP Valve	25	0.720	326.6
G100-2235-48	3/8" OD (1/4" ID) 3/8" x 1/2" SS (48") FIP x FIP Valve	25	0.801	363.2
G100-2235-60	3/8" OD (1/4" ID) 3/8" x 1/2" SS (60") FIP x FIP Valve	12	0.881	399.8
G100-2235-72	3/8" OD (1/4" ID) 3/8" x 1/2" SS (72") FIP x FIP Valve	12	0.962	436.4



Stainless Steel Flexible Gas Connector 3/8" OD (1/4" ID) 1/2" FIP X 1/2" FIP

PART #	OD - DESCRIPTION	BOX QTY	WT (LB)	WT (G)
G100-3232-12	3/8" OD (1/4" ID) 1/2" x 1/2" SS (12") FIP x FIP	25	0.380	172.5
G100-3232-18	3/8" OD (1/4" ID) 1/2" x 1/2" SS (18") FIP x FIP	25	0.421	190.8
G100-3232-24	3/8" OD (1/4" ID) 1/2" x 1/2" SS (24") FIP x FIP	25	0.461	209.1
G100-3232-30	3/8" OD (1/4" ID) 1/2" x 1/2" SS (30") FIP x FIP	25	0.501	227.3
G100-3232-36	3/8" OD (1/4" ID) 1/2" x 1/2" SS (36") FIP x FIP	25	0.542	245.6
G100-3232-48	3/8" OD (1/4" ID) 1/2" x 1/2" SS (48") FIP x FIP	25	0.622	282.2
G100-3232-60	3/8" OD (1/4" ID) 1/2" x 1/2" SS (60") FIP x FIP	12	0.703	318.8
G100-3232-72	3/8" OD (1/4" ID) 1/2" x 1/2" SS (72") FIP x FIP	12	0.783	355.3



Coated Stainless Steel Flexible Gas Connector 3/8" OD (1/4" ID) 3/8" FIP X 3/8" FIP

PART #	OD - DESCRIPTION	BOX QTY	WT (LB)	WT (G)
G103-2222-12	3/8" OD (1/4" ID) 3/8" x 3/8" SS Coated (12") FIP x FIP	25	0.341	154.9
G103-2222-18	3/8" OD (1/4" ID) 3/8" x 3/8" SS Coated (18") FIP x FIP	25	0.393	178.2
G103-2222-24	3/8" OD (1/4" ID) 3/8" x 3/8" SS Coated (24") FIP x FIP	25	0.444	201.5
G103-2222-30	3/8" OD (1/4" ID) 3/8" x 3/8" SS Coated (30") FIP x FIP	25	0.496	224.8
G103-2222-36	3/8" OD (1/4" ID) 3/8" x 3/8" SS Coated (36") FIP x FIP	25	0.547	248.1

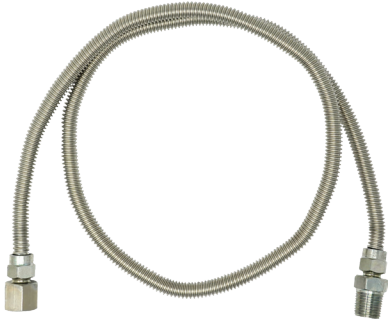


Coated Stainless Steel Flexible Gas Connector 3/8" OD (1/4" ID) 3/8" FIP X 3/8" FIP - Continued

PART #	OD - DESCRIPTION	BOX QTY	WT (LB)	WT (G)
G103-2222-48	3/8" OD (1/4" ID) 3/8" x 3/8" SS Coated (48") FIP x FIP	25	0.650	294.7
G103-2222-60	3/8" OD (1/4" ID) 3/8" x 3/8" SS Coated (60") FIP x FIP	12	0.753	341.4
G103-2222-72	3/8" OD (1/4" ID) 3/8" x 3/8" SS Coated (72") FIP x FIP	12	0.855	388.0

Coated Stainless Steel Flexible Gas Connector 3/8" OD (1/4" ID) 1/2" FIP X 1/2" FIP

PART #	OD - DESCRIPTION	BOX QTY	WT (LB)	WT (G)
G103-3232-12	3/8" OD (1/4" ID) 1/2" x 1/2" SS Coated (12") FIP x FIP	25	0.403	182.8
G103-3232-18	3/8" OD (1/4" ID) 1/2" x 1/2" SS Coated (18") FIP x FIP	25	0.455	206.2
G103-3232-24	3/8" OD (1/4" ID) 1/2" x 1/2" SS Coated (24") FIP x FIP	25	0.506	229.5
G103-3232-30	3/8" OD (1/4" ID) 1/2" x 1/2" SS Coated (30") FIP x FIP	25	0.557	252.8
G103-3232-36	3/8" OD (1/4" ID) 1/2" x 1/2" SS Coated (36") FIP x FIP	25	0.609	276.1
G103-3232-48	3/8" OD (1/4" ID) 1/2" x 1/2" SS Coated (48") FIP x FIP	25	0.712	322.8
G103-3232-60	3/8" OD (1/4" ID) 1/2" x 1/2" SS Coated (60") FIP x FIP	12	0.814	369.4
G103-3232-72	3/8" OD (1/4" ID) 1/2" x 1/2" SS Coated (72") FIP x FIP	12	0.917	416.0



Stainless Steel Flexible Gas Connectors 3/8" OD (1/4" ID) 1/2" FIP X 1/2" MIP

PART #	OD - DESCRIPTION	BOX QTY	WT (LB)	WT (G)
G100-3132-12	3/8" OD (1/4" ID) 1/2" x 1/2" SS (12") FIP x MIP	25	0.398	180.5
G100-3132-18	3/8" OD (1/4" ID) 1/2" x 1/2" SS (18") FIP x MIP	25	0.438	198.8
G100-3132-24	3/8" OD (1/4" ID) 1/2" x 1/2" SS (24") FIP x MIP	25	0.479	217.0
G100-3132-30	SS Gas Connector 30" x 3/8" OD (1/4" ID) 1/2" FIP x 1/2" MIP	25	0.519	235.3
G100-3132-36	SS Gas Connector 36" x 3/8" OD (1/4" ID) 1/2" FIP x 1/2" MIP	25	0.559	253.6
G100-3132-48	SS Gas Connector 48" x 3/8" OD (1/4" ID) 1/2" FIP x 1/2" MIP	25	0.640	290.2
G100-3132-60	SS Gas Connector 60" x 3/8" OD (1/4" ID) 1/2" FIP x 1/2" MIP	12	0.720	326.8
G100-3132-72	SS Gas Connector 72" x 3/8" OD (1/4" ID) 1/2" FIP x 1/2" MIP	12	0.801	363.4



Coated Stainless Steel Flexible Gas Connectors 3/8" OD (1/4" ID) 3/8" FIP X 3/8" MIP

PART #	OD - DESCRIPTION	BOX QTY	WT (LB)	WT (G)
G103-2122-12	3/8" OD (1/4" ID) 3/8" x 3/8" SS Coated (12") FIP x MIP	25	0.357	161.8
G103-2122-18	3/8" OD (1/4" ID) 3/8" x 3/8" SS Coated (12") FIP x MIP	25	0.408	185.2
G103-2122-24	3/8" OD (1/4" ID) 3/8" x 3/8" SS Coated (18") FIP x MIP	25	0.460	208.5
G103-2122-30	3/8" OD (1/4" ID) 3/8" x 3/8" SS Coated (24") FIP x MIP	25	0.511	231.8
G103-2122-36	3/8" OD (1/4" ID) 3/8" x 3/8" SS Coated (30") FIP x MIP	25	0.563	255.1



Coated Stainless Steel Flexible Gas Connectors 3/8" OD (1/4" ID) 3/8" FIP X 3/8" MIP - *Continued*

PART #	OD - DESCRIPTION	BOX QTY	WT (LB)	WT (G)
G103-2122-48	3/8" OD (1/4" ID) 3/8" x 3/8" SS Coated (36") FIP x MIP	25	0.665	301.8
G103-2122-60	3/8" OD (1/4" ID) 3/8" x 3/8" SS Coated (48") FIP x MIP	12	0.768	348.4
G103-2122-72	3/8" OD (1/4" ID) 3/8" x 3/8" SS Coated (60") FIP x MIP	12	0.871	395.0



Coated Stainless Steel Flexible Gas Connectors 3/8" OD (1/4" ID) 1/2" FIP X 3/8" MIP

PART #	OD - DESCRIPTION	BOX QTY	WT (LB)	WT (G)
G103-2132-12	3/8" OD (1/4" ID) 1/2" x 3/8" SS Coated (12") FIP x MIP	25	0.388	175.9
G103-2132-18	3/8" OD (1/4" ID) 1/2" x 3/8" SS Coated (18") FIP x MIP	25	0.439	199.2
G103-2132-24	3/8" OD (1/4" ID) 1/2" x 3/8" SS Coated (24") FIP x MIP	25	0.491	222.5
G103-2132-30	3/8" OD (1/4" ID) 1/2" x 3/8" SS Coated (30") FIP x MIP	25	0.542	245.8
G103-2132-36	3/8" OD (1/4" ID) 1/2" x 3/8" SS Coated (36") FIP x MIP	25	0.593	269.1
G103-2132-48	3/8" OD (1/4" ID) 1/2" x 3/8" SS Coated (48") FIP x MIP	25	0.696	315.7
G103-2132-60	3/8" OD (1/4" ID) 1/2" x 3/8" SS Coated (60") FIP x MIP	12	0.799	362.4
G103-2132-72	3/8" OD (1/4" ID) 1/2" x 3/8" SS Coated (72") FIP x MIP	12	0.902	409.0



Coated Stainless Steel Flexible Gas Connectors 3/8" OD (1/4" ID) 3/8" FIP X 1/2" MIP

PART #	OD - DESCRIPTION	BOX QTY	WT (LB)	WT (G)
G103-3122-12	3/8" OD (1/4" ID) 3/8" x 1/2" SS Coated (12") FIP x MIP	25	0.390	176.9
G103-3122-18	3/8" OD (1/4" ID) 3/8" x 1/2" SS Coated (18") FIP x MIP	25	0.441	200.2
G103-3122-24	3/8" OD (1/4" ID) 3/8" x 1/2" SS Coated (24") FIP x MIP	25	0.493	223.5
G103-3122-30	3/8" OD (1/4" ID) 3/8" x 1/2" SS Coated (30") FIP x MIP	25	0.544	246.8
G103-3122-36	3/8" OD (1/4" ID) 3/8" x 1/2" SS Coated (36") FIP x MIP	25	0.596	270.1
G103-3122-48	3/8" OD (1/4" ID) 3/8" x 1/2" SS Coated (48") FIP x MIP	25	0.698	316.7
G103-3122-60	3/8" OD (1/4" ID) 3/8" x 1/2" SS Coated (60") FIP x MIP	12	0.801	363.4
G103-3122-72	3/8" OD (1/4" ID) 3/8" x 1/2" SS Coated (72") FIP x MIP	12	0.904	410.0



Coated Stainless Steel Flexible Gas Connectors 3/8" OD (1/4" ID) 1/2" FIP X 1/2" MIP

PART #	OD - DESCRIPTION	BOX QTY	WT (LB)	WT (G)
G103-3132-12	3/8" OD (1/4" ID) 1/2" x 1/2" SS Coated (12") FIP x MIP	25	0.421	190.9
G103-3132-18	3/8" OD (1/4" ID) 1/2" x 1/2" SS Coated (18") FIP x MIP	25	0.472	214.2
G103-3132-24	3/8" OD (1/4" ID) 1/2" x 1/2" SS Coated (24") FIP x MIP	25	0.524	237.5
G103-3132-30	3/8" OD (1/4" ID) 1/2" x 1/2" SS Coated (30") FIP x MIP	25	0.575	260.8
G103-3132-36	3/8" OD (1/4" ID) 1/2" x 1/2" SS Coated (36") FIP x MIP	25	0.626	284.1



Coated Stainless Steel Flexible Gas Connectors 3/8" OD (1/4" ID) 1/2" FIP X 1/2" MIP - *Continued*

PART #	OD - DESCRIPTION	BOX QTY	WT (LB)	WT (G)
G103-3132-48	3/8" OD (1/4" ID) 1/2" x 1/2" SS Coated (48") FIP x MIP	25	0.729	330.8
G103-3132-60	3/8" OD (1/4" ID) 1/2" x 1/2" SS Coated (60") FIP x MIP	12	0.832	377.4
G103-3132-72	3/8" OD (1/4" ID) 1/2" x 1/2" SS Coated (72") FIP x MIP	12	0.935	424.0



Stainless Steel Flexible Gas Connectors 3/8"OD (1/4" ID) 1/2" MIP X 1/2" MIP

PART #	OD - DESCRIPTION	BOX QTY	WT (LB)	WT (G)
G100-3131-12	3/8" OD (1/4" ID) 1/2" x 1/2" SS (12") MIP x MIP	25	0.416	188.5
G100-3131-18	3/8" OD (1/4" ID) 1/2" x 1/2" SS (18") MIP x MIP	25	0.456	206.7
G100-3131-24	3/8" OD (1/4" ID) 1/2" x 1/2" SS (24") MIP x MIP	25	0.496	225.1
G100-3131-30	3/8" OD (1/4" ID) 1/2" x 1/2" SS (30") MIP x MIP	25	0.537	243.4
G100-3131-36	3/8" OD (1/4" ID) 1/2" x 1/2" SS (36") MIP x MIP	25	0.577	261.6
G100-3131-48	SS Gas Connector 48" x 3/8" OD (1/4" ID) 1/2" MIP x 1/2" MIP	25	0.657	298.2
G100-3131-60	SS Gas Connector 60" x 3/8" OD (1/4" ID) 1/2" MIP x 1/2" MIP	12	0.738	334.8
G100-3131-72	SS Gas Connector 72" x 3/8" OD (1/4" ID) 1/2" MIP x 1/2" MIP	12	0.819	371.4



Coated Stainless Steel Flexible Gas Connectors 3/8" OD (1/4" ID) 1/2" MIP X 1/2" FIP Valve

PART #	OD - DESCRIPTION	BOX QTY	WT (LB)	WT (G)
G103-3135-12	3/8" OD (1/4" ID) 1/2" x 1/2" Coated (12") MIP x FIP Valve	25	0.637	288.8
G103-3135-18	3/8" OD (1/4" ID) 1/2" x 1/2" Coated (18") MIP x FIP Valve	25	0.688	312.2
G103-3135-24	3/8" OD (1/4" ID) 1/2" x 1/2" Coated (24") MIP x FIP Valve	25	0.740	335.5
G103-3135-30	3/8" OD (1/4" ID) 1/2" x 1/2" Coated (30") MIP x FIP Valve	25	0.791	358.8
G103-3135-36	3/8" OD (1/4" ID) 1/2" x 1/2" Coated (36") MIP x FIP Valve	25	0.843	382.2
G103-3135-48	3/8" OD (1/4" ID) 1/2" x 1/2" Coated (48") MIP x FIP Valve	25	0.945	428.8
G103-3135-60	3/8" OD (1/4" ID) 1/2" x 1/2" Coated (60") MIP x FIP Valve	12	1.048	475.4
G103-3135-72	3/8" OD (1/4" ID) 1/2" x 1/2" Coated (72") MIP x FIP Valve	12	1.151	522.0



Coated Stainless Steel Flexible Gas Connectors 3/8" OD (1/4" ID) 3/8" MIP X 3/8" MIP

PART #	OD - DESCRIPTION	BOX QTY	WT (LB)	WT (G)
G103-2121-12	3/8" OD (1/4" ID) 3/8" x 3/8" SS Coated (12") MIP x MIP	25	0.372	168.9
G103-2121-18	3/8" OD (1/4" ID) 3/8" x 3/8" SS Coated (18") MIP x MIP	25	0.424	192.2
G103-2121-24	3/8" OD (1/4" ID) 3/8" x 3/8" SS Coated (24") MIP x MIP	25	0.475	215.5
G103-2121-30	3/8" OD (1/4" ID) 3/8" x 3/8" SS Coated (30") MIP x MIP	25	0.527	238.8
G103-2121-36	3/8" OD (1/4" ID) 3/8" x 3/8" SS Coated (36") MIP x MIP	25	0.578	262.1



Coated Stainless Steel Flexible Gas Connectors 3/8" OD (1/4" ID) 3/8" MIP X 3/8" MIP - *Continued*

PART #	OD - DESCRIPTION	BOX QTY	WT (LB)	WT (G)
G103-2121-48	3/8" OD (1/4" ID) 3/8" x 3/8" SS Coated (48") MIP x MIP	25	0.681	308.8
G103-2121-60	3/8" OD (1/4" ID) 3/8" x 3/8" SS Coated (60") MIP x MIP	12	0.784	355.4
G103-2121-72	3/8" OD (1/4" ID) 3/8" x 3/8" SS Coated (72") MIP x MIP	12	0.886	402.0



Coated Stainless Steel Flexible Gas Connectors 3/8" OD (1/4" ID) 1/2" MIP X 3/8" MIP

PART #	OD - DESCRIPTION	BOX QTY	WT (LB)	WT (G)
G103-2131-12	3/8" OD (1/4" ID) 1/2" x 3/8" SS Coated (12") MIP x MIP	25	0.405	183.8
G103-2131-18	3/8" OD (1/4" ID) 1/2" x 3/8" SS Coated (18") MIP x MIP	25	0.457	207.2
G103-2131-24	3/8" OD (1/4" ID) 1/2" x 3/8" SS Coated (24") MIP x MIP	25	0.508	230.5
G103-2131-30	3/8" OD (1/4" ID) 1/2" x 3/8" SS Coated (30") MIP x MIP	25	0.560	253.8
G103-2131-36	3/8" OD (1/4" ID) 1/2" x 3/8" SS Coated (36") MIP x MIP	25	0.611	277.1
G103-2131-48	3/8" OD (1/4" ID) 1/2" x 3/8" SS Coated (48") MIP x MIP	25	0.714	323.8
G103-2131-60	3/8" OD (1/4" ID) 1/2" x 3/8" SS Coated (60") MIP x MIP	12	0.817	370.4
G103-2131-72	3/8" OD (1/4" ID) 1/2" x 3/8" SS Coated (72") MIP x MIP	12	0.919	417.0



Coated Stainless Steel Flexible Gas Connectors 3/8" OD (1/4" ID) 1/2" MIP X 1/2" MIP

PART #	OD - DESCRIPTION	BOX QTY	WT (LB)	WT (G)
G103-3131-12	3/8" OD (1/4" ID) 1/2" x 1/2" SS Coated (12") MIP x MIP	25	0.438	198.9
G103-3131-18	3/8" OD (1/4" ID) 1/2" x 1/2" SS Coated (18") MIP x MIP	25	0.490	222.2
G103-3131-24	3/8" OD (1/4" ID) 1/2" x 1/2" SS Coated (24") MIP x MIP	25	0.541	245.5
G103-3131-30	3/8" OD (1/4" ID) 1/2" x 1/2" SS Coated (30") MIP x MIP	25	0.593	268.8
G103-3131-36	3/8" OD (1/4" ID) 1/2" x 1/2" SS Coated (36") MIP x MIP	25	0.644	292.1
G103-3131-48	3/8" OD (1/4" ID) 1/2" x 1/2" SS Coated (48") MIP x MIP	25	0.747	338.7
G103-3131-60	3/8" OD (1/4" ID) 1/2" x 1/2" SS Coated (60") MIP x MIP	12	0.850	385.4
G103-3131-72	3/8" OD (1/4" ID) 1/2" x 1/2" SS Coated (72") MIP x MIP	12	0.952	432.0

Stainless Steel Flexible Gas Connectors 1/2" OD (3/8" ID) 3/8" FIP x 3/8" FIP



PART #	OD - DESCRIPTION	BOX QTY	WT (LB)	WT (G)
G200-2222-12	1/2" OD (3/8" ID) 3/8" x 3/8" SS (12") FIP x FIP	EA	0.376	170.5
G200-2222-18	1/2" OD (3/8" ID) 3/8" x 3/8" SS (18") FIP x FIP	5	0.435	197.5
G200-2222-48	1/2" OD (3/8" ID) 3/8" x 3/8" SS (48") FIP x FIP	EA	0.711	322.5
G200-2222-72	1/2" OD (3/8" ID) 3/8" x 3/8" SS (72") FIP x FIP	4	0.866	393.0



Stainless Steel Flexible Gas Connectors 1/2" OD (3/8" ID) 3/8" MIP x 3/8" MIP

PART #	OD - DESCRIPTION	BOX QTY	WT (LB)	WT (G)
G200-2121-12	1/2" OD (3/8" ID) 3/8" x 3/8" SS (12") MIP x MIP	5	0.402	182.5
G200-2121-18	1/2" OD (3/8" ID) 3/8" x 3/8" SS (18") MIP x MIP	EA	0.462	209.5
G200-2121-24	1/2" OD (3/8" ID) 3/8" x 3/8" SS (24") MIP x MIP	EA	0.496	225.0
G200-2121-36	1/2" OD (3/8" ID) 3/8" x 3/8" SS (36") MIP x MIP	5	0.618	280.5
G200-2121-48	1/2" OD (3/8" ID) 3/8" x 3/8" SS (48") MIP x MIP	EA	0.737	334.5
G200-2121-60	1/2" OD (3/8" ID) 3/8" x 3/8" SS (60") MIP x MIP	EA	0.816	370.0
G200-2121-72	1/2" OD (3/8" ID) 3/8" x 3/8" SS (72") MIP x MIP	EA	0.893	405.0



Coated Stainless Steel Flexible Gas Connectors 1/2" OD (3/8" ID) 1/2" FIP x 3/8" FIP

PART #	OD - DESCRIPTION	BOX QTY	WT (LB)	WT (G)
G203-2232-12	SS Coated Gas Connector 12" x 1/2" OD (3/8" ID) 1/2" FIP x 3/8" FIP	25	0.493	223.6
G203-2232-18	SS Coated Gas Connector 18" x 1/2" OD (3/8" ID) 1/2" FIP x 3/8" FIP	25	0.561	254.5
G203-2232-24	SS Coated Gas Connector 24" x 1/2" OD (3/8" ID) 1/2" FIP x 3/8" FIP	25	0.629	285.4
G203-2232-30	1/2" OD (3/8" ID) 1/2" x 3/8" SS Coated (30") FIP x FIP	25	0.698	316.4
G203-2232-36	1/2" OD (3/8" ID) 1/2" x 3/8" SS Coated (36") FIP x FIP	25	0.766	347.3
G203-2232-48	1/2" OD (3/8" ID) 1/2" x 3/8" SS Coated (48") FIP x FIP	25	0.902	409.2



Coated Stainless Steel Flexible Gas Connectors 1/2" OD (3/8" ID) 1/2" FIP x 3/8" FIP) - Continued

PART #	OD - DESCRIPTION	BOX QTY	WT (LB)	WT (G)
G203-2232-60	1/2" OD (3/8" ID) 1/2" x 3/8" SS Coated (60") FIP x FIP	12	1.039	471.1
G203-2232-72	1/2" OD (3/8" ID) 1/2" x 3/8" SS Coated (72") FIP x FIP	12	1.175	532.9



Coated Stainless Steel Flexible Gas Connectors with 1/2" MIP x 3/8" MIP

PART #	OD - DESCRIPTION	BOX QTY	WT (LB)	WT (G)
G203-2131-12	1/2" OD (3/8" ID) 1/2" x 3/8" SS Coated (12") MIP x MIP	25	0.500	226.6
G203-2131-18	1/2" OD (3/8" ID) 1/2" x 3/8" SS Coated (18") MIP x MIP	25	0.568	257.5
G203-2131-24	1/2" OD (3/8" ID) 1/2" x 3/8" SS Coated (24") MIP x MIP	25	0.636	288.4
G203-2131-30	1/2" OD (3/8" ID) 1/2" x 3/8" SS Coated (30") MIP x MIP	25	0.704	319.4
G203-2131-36	1/2" OD (3/8" ID) 1/2" x 3/8" SS Coated (36") MIP x MIP	25	0.772	350.3
G203-2131-48	1/2" OD (3/8" ID) 1/2" x 3/8" SS Coated (48") MIP x MIP	25	0.909	412.2
G203-2131-60	1/2" OD (3/8" ID) 1/2" x 3/8" SS Coated (60") MIP x MIP	12	1.045	474.0
G203-2131-72	1/2" OD (3/8" ID) 1/2" x 3/8" SS Coated (72") MIP x MIP	12	1.182	535.9



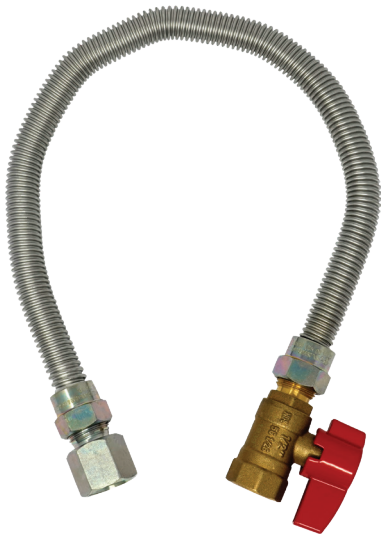
Coated Stainless Steel Flexible Gas Connectors 1/2" OD (3/8" ID) 1/2" FIP X 1/2" FIP Valve

PART #	OD - DESCRIPTION	BOX QTY	WT (LB)	WT (G)
G203-3235-12	1/2" OD (3/8" ID) 1/2" x 1/2" Coated (12") FIP x FIP Valve	25	0.707	320.6



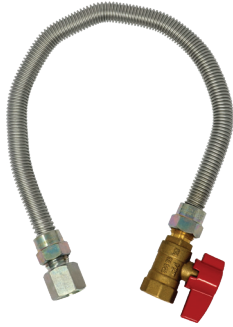
Coated Stainless Steel Flexible Gas Connectors 1/2" OD (3/8" ID) 1/2" FIP X 1/2" FIP Valve - *Continued*

PART #	OD - DESCRIPTION	BOX QTY	WT (LB)	WT (G)
G203-3235-18	1/2" OD (3/8" ID) 1/2" x 1/2" Coated (18") FIP x FIP Valve	25	0.775	351.5
G203-3235-24	1/2" OD (3/8" ID) 1/2" x 1/2" Coated (24") FIP x FIP Valve	25	0.843	382.4
G203-3235-30	1/2" OD (3/8" ID) 1/2" x 1/2" Coated (30") FIP x FIP Valve	25	0.911	413.4
G203-3235-36	1/2" OD (3/8" ID) 1/2" x 1/2" Coated (36") FIP x FIP Valve	25	0.980	444.3
G203-3235-48	1/2" OD (3/8" ID) 1/2" x 1/2" Coated (48") FIP x FIP Valve	25	1.116	506.2
G203-3235-60	1/2" OD (3/8" ID) 1/2" x 1/2" Coated (60") FIP x FIP Valve	12	1.252	568.0
G203-3235-72	1/2" OD (3/8" ID) 1/2" x 1/2" Coated (72") FIP x FIP Valve	12	1.389	629.9



Coated Stainless Steel Flexible Gas Connectors 1/2" OD (3/8" ID) 1/2" FIP X 1/2" FIP Valve

PART #	OD - DESCRIPTION	BOX QTY	WT (LB)	WT (G)
G200-3235-12	1/2" OD (3/8" ID) 1/2" x 1/2" SS (12") FIP x FIP Valve	25	0.691	313.5
G200-3235-18	1/2" OD (3/8" ID) 1/2" x 1/2" SS (18") FIP x FIP Valve	25	0.755	342.6
G200-3235-24	1/2" OD (3/8" ID) 1/2" x 1/2" SS (24") FIP x FIP Valve	25	0.820	371.7
G200-3235-30	1/2" OD (3/8" ID) 1/2" x 1/2" SS (30") FIP x FIP Valve	25	0.884	400.8
G200-3235-36	1/2" OD (3/8" ID) 1/2" x 1/2" SS (36") FIP x FIP Valve	25	0.948	429.9
G200-3232-48	1/2" OD (3/8" ID) 1/2" x 1/2" SS (48") FIP x FIP	25	0.854	387.1



Coated Stainless Steel Flexible Gas Connectors 1/2" OD (3/8" ID) 1/2" FIP X 1/2" FIP Valve - *Continued*

PART #	OD - DESCRIPTION	BOX QTY	WT (LB)	WT (G)
G200-3232-60	1/2" OD (3/8" ID) 1/2" x 1/2" SS (60") FIP x FIP	12	0.982	445.3
G200-3232-72	1/2" OD (3/8" ID) 1/2" x 1/2" SS (72") FIP x FIP	12	1.110	503.6



Coated Stainless Steel Flexible Gas Connectors 1/2" OD (3/8" ID) 1/2" FIP x 1/2" FIP

PART #	OD - DESCRIPTION	BOX QTY	WT (LB)	WT (G)
G203-3232-12	1/2" OD (3/8" ID) 1/2" x 1/2" SS Coated (12") FIP x FIP	25	0.489	221.6
G203-3232-18	1/2" OD (3/8" ID) 1/2" x 1/2" SS Coated (18") FIP x FIP	25	0.557	252.5
G203-3232-24	1/2" OD (3/8" ID) 1/2" x 1/2" SS Coated (24") FIP x FIP	25	0.625	283.4
G203-3232-30	1/2" OD (3/8" ID) 1/2" x 1/2" SS Coated (30") FIP x FIP	25	0.693	314.4
G203-3232-36	1/2" OD (3/8" ID) 1/2" x 1/2" SS Coated (36") FIP x FIP	25	0.761	345.3
G203-3232-48	1/2" OD (3/8" ID) 1/2" x 1/2" SS Coated (48") FIP x FIP	25	0.898	407.2
G203-3232-60	1/2" OD (3/8" ID) 1/2" x 1/2" SS Coated (60") FIP x FIP	12	1.034	469.1
G203-3232-72	1/2" OD (3/8" ID) 1/2" x 1/2" SS Coated (72") FIP x FIP	12	1.170	530.9



Coated Stainless Steel Flexible Gas Connectors 1/2" OD (3/8" ID) 1/2" FIP X 1/2" FIP Valve

PART #	OD - DESCRIPTION	BOX QTY	WT (LB)	WT (G)
G200-3132-12	1/2" OD (3/8" ID) 1/2" x 1/2" SS (12") FIP x MIP	25	0.480	217.5



Coated Stainless Steel Flexible Gas Connectors 1/2" OD (3/8" ID) 1/2" FIP X 1/2" FIP Valve - *Continued*

PART #	OD - DESCRIPTION	BOX QTY	WT (LB)	WT (G)
G200-3132-18	1/2" OD (3/8" ID) 1/2" x 1/2" SS (18") FIP x MIP	25	0.544	246.6
G200-3132-24	1/2" OD (3/8" ID) 1/2" x 1/2" SS (24") FIP x MIP	25	0.608	275.7
G200-3132-30	1/2" OD (3/8" ID) 1/2" x 1/2" SS (30") FIP x MIP	25	0.672	304.8
G200-3132-36	1/2" OD (3/8" ID) 1/2" x 1/2" SS (36") FIP x MIP	25	0.736	333.9
G200-3132-48	1/2" OD (3/8" ID) 1/2" x 1/2" SS (48") FIP x MIP	25	0.865	392.1
G200-3132-60	1/2" OD (3/8" ID) 1/2" x 1/2" SS (60") FIP x MIP	12	0.993	450.4
G200-3132-72	1/2" OD (3/8" ID) 1/2" x 1/2" SS (72") FIP x MIP	12	1.121	508.6



Coated Stainless Steel Gas Flexible Connectors 1/2" OD (3/8" ID) 1/2" FIP x 3/8" MIP

PART #	OD - DESCRIPTION	BOX QTY	WT (LB)	WT (G)
G203-2132-12	1/2" OD (3/8" ID) 1/2" x 3/8" SS Coated (12") FIP x MIP	25	0.486	220.6
G203-2132-18	1/2" OD (3/8" ID) 1/2" x 3/8" SS Coated (18") FIP x MIP	25	0.555	251.5
G203-2132-24	1/2" OD (3/8" ID) 1/2" x 3/8" SS Coated (24") FIP x MIP	25	0.623	282.5
G203-2132-30	1/2" OD (3/8" ID) 1/2" x 3/8" SS Coated (30") FIP x MIP	25	0.691	313.4
G203-2132-36	1/2" OD (3/8" ID) 1/2" x 3/8" SS Coated (36") FIP x MIP	25	0.759	344.3
G203-2132-48	1/2" OD (3/8" ID) 1/2" x 3/8" SS Coated (48") FIP x MIP	25	0.896	406.2



Coated Stainless Steel Gas Flexible Connectors 1/2" OD (3/8" ID) 1/2" FIP x 3/8" MIP - Continued

PART #	OD - DESCRIPTION	BOX QTY	WT (LB)	WT (G)
G203-2132-60	1/2" OD (3/8" ID) 1/2" x 3/8" SS Coated (60") FIP x MIP	12	1.032	468.1
G203-2132-72	1/2" OD (3/8" ID) 1/2" x 3/8" SS Coated (72") FIP x MIP	12	1.168	529.9



Coated Stainless Steel Gas Flexible Connectors 1/2" OD (3/8" ID) 3/8" FIP x 1/2" MIP

PART #	OD - DESCRIPTION	BOX QTY	WT (LB)	WT (G)
G203-3122-12	1/2" OD (3/8" ID) 3/8" x 1/2" SS Coated (12") FIP x MIP	25	0.506	229.6
G203-3122-18	1/2" OD (3/8" ID) 3/8" x 1/2" SS Coated (18") FIP x MIP	25	0.574	260.5
G203-3122-24	1/2" OD (3/8" ID) 3/8" x 1/2" SS Coated (24") FIP x MIP	25	0.643	291.4
G203-3122-30	1/2" OD (3/8" ID) 3/8" x 1/2" SS Coated (30") FIP x MIP	25	0.711	322.4
G203-3122-36	1/2" OD (3/8" ID) 3/8" x 1/2" SS Coated (36") FIP x MIP	25	0.779	353.3
G203-3122-48	1/2" OD (3/8" ID) 3/8" x 1/2" SS Coated (48") FIP x MIP	25	0.915	415.2
G203-3122-60	1/2" OD (3/8" ID) 3/8" x 1/2" SS Coated (60") FIP x MIP	12	1.052	477.0
G203-3122-72	1/2" OD (3/8" ID) 3/8" x 1/2" SS Coated (72") FIP x MIP	12	1.188	538.9



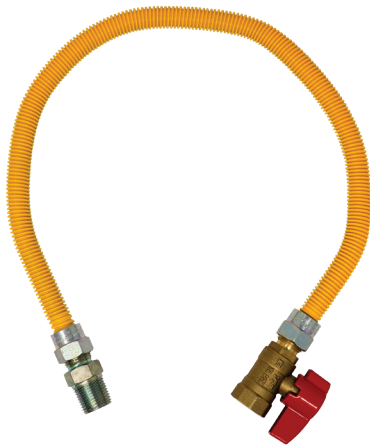
Coated Stainless Steel Flexible Gas Connectors 1/2" OD (3/8" ID) 1/2" FIP x 1/2" MIP

PART #	OD - DESCRIPTION	BOX QTY	WT (LB)	WT (G)
G203-3132-12	1/2" OD (3/8" ID) 1/2" x 1/2" SS Coated (12") FIP x MIP	25	0.502	227.6



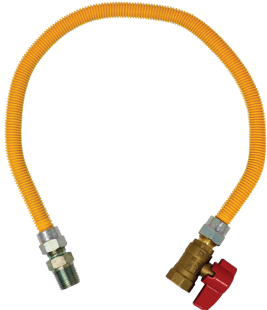
Coated Stainless Steel Flexible Gas Connectors 1/2" OD (3/8" ID) 1/2" FIP x 1/2" MIP - Continued

PART #	OD - DESCRIPTION	BOX QTY	WT (LB)	WT (G)
G203-3132-18	1/2" OD (3/8" ID) 1/2" x 1/2" SS Coated (18") FIP x MIP	25	0.570	258.5
G203-3132-24	1/2" OD (3/8" ID) 1/2" x 1/2" SS Coated (24") FIP x MIP	25	0.638	289.4
G203-3132-30	1/2" OD (3/8" ID) 1/2" x 1/2" SS Coated (30") FIP x MIP	25	0.706	320.4
G203-3132-36	1/2" OD (3/8" ID) 1/2" x 1/2" SS Coated (36") FIP x MIP	25	0.775	351.3
G203-3132-48	1/2" OD (3/8" ID) 1/2" x 1/2" SS Coated (48") FIP x MIP	25	0.911	413.2
G203-3132-60	1/2" OD (3/8" ID) 1/2" x 1/2" SS Coated (60") FIP x MIP	12	1.047	475.0
G203-3132-72	1/2" OD (3/8" ID) 1/2" x 1/2" SS Coated (72") FIP x MIP	12	1.184	536.9



Coated Stainless Steel Flexible Gas Connectors 1/2" OD (3/8" ID) 1/2" MIP X 1/2" FIP Valve

PART #	OD - DESCRIPTION	BOX QTY	WT (LB)	WT (G)
G203-3135-12	1/2" OD (3/8" ID) 1/2" x 1/2" Coated (12") MIP x FIP Valve	25	0.720	326.5
G203-3135-18	1/2" OD (3/8" ID) 1/2" x 1/2" Coated (18") MIP x FIP Valve	25	0.788	357.5
G203-3135-24	1/2" OD (3/8" ID) 1/2" x 1/2" Coated (24") MIP x FIP Valve	25	0.856	388.4
G203-3135-30	1/2" OD (3/8" ID) 1/2" x 1/2" Coated (30") MIP x FIP Valve	25	0.925	419.4
G203-3135-36	1/2" OD (3/8" ID) 1/2" x 1/2" Coated (36") MIP x FIP Valve	25	0.993	450.3
G203-3135-48	1/2" OD (3/8" ID) 1/2" x 1/2" Coated (48") MIP x FIP Valve	25	1.129	512.2



Coated Stainless Steel Flexible Gas Connectors 1/2" OD (3/8" ID) 1/2" MIP X 1/2" FIP Valve - Continued

PART #	OD - DESCRIPTION	BOX QTY	WT (LB)	WT (G)
G203-3135-60	1/2" OD (3/8" ID) 1/2" x 1/2" Coated (60") MIP x FIP Valve	12	1.266	574.0
G203-3135-72	1/2" OD (3/8" ID) 1/2" x 1/2" Coated (72") MIP x FIP Valve	12	1.402	635.9



Stainless Steel Flexible Gas Connectors 1/2" OD (3/8" ID) 1/2" MIP X 1/2" FIP Valve

PART #	OD - DESCRIPTION	BOX QTY	WT (LB)	WT (G)
G200-3135-12	1/2" OD (3/8" ID) 1/2" x 1/2" SS (12") MIP x FIP Valve	25	0.702	318.5
G200-3135-18	1/2" OD (3/8" ID) 1/2" x 1/2" SS (18") MIP x FIP Valve	25	0.766	347.6
G200-3135-24	1/2" OD (3/8" ID) 1/2" x 1/2" SS (24") MIP x FIP Valve	25	0.831	376.7
G200-3135-30	1/2" OD (3/8" ID) 1/2" x 1/2" SS (30") MIP x FIP Valve	25	0.895	405.8
G200-3135-36	1/2" OD (3/8" ID) 1/2" x 1/2" SS (36") MIP x FIP Valve	25	0.959	434.9
G200-3135-48	1/2" OD (3/8" ID) 1/2" x 1/2" SS (48") MIP x FIP Valve	25	1.087	493.1
G200-3135-60	1/2" OD (3/8" ID) 1/2" x 1/2" SS (60") MIP x FIP Valve	12	1.216	551.3
G200-3135-72	1/2" OD (3/8" ID) 1/2" x 1/2" SS (72") MIP x FIP Valve	12	1.344	609.6



Stainless Steel Flexible Gas Connectors 1/2" OD (3/8" ID) 1/2" MIP x 1/2" MIP

PART #	OD - DESCRIPTION	BOX QTY	WT (LB)	WT (G)
G200-3131-12	1/2" OD (3/8" ID) 1/2" x 1/2" SS (12") MIP x MIP	25	0.491	222.5



Stainless Steel Flexible Gas Connectors 1/2" OD (3/8" ID) 1/2" MIP x 1/2" MIP - Continued

PART #	OD - DESCRIPTION	BOX QTY	WT (LB)	WT (G)
G200-3131-18	1/2" OD (3/8" ID) 1/2" x 1/2" SS (18") MIP x MIP	25	0.555	251.6
G200-3131-24	1/2" OD (3/8" ID) 1/2" x 1/2" SS (24") MIP x MIP	25	0.619	280.7
G200-3131-30	1/2" OD (3/8" ID) 1/2" x 1/2" SS (30") MIP x MIP	25	0.683	309.8
G200-3131-36	1/2" OD (3/8" ID) 1/2" x 1/2" SS (36") MIP x MIP	25	0.747	338.9
G200-3131-48	1/2" OD (3/8" ID) 1/2" x 1/2" SS (48") MIP x MIP	25	0.876	397.2
G200-3131-60	1/2" OD (3/8" ID) 1/2" x 1/2" SS (60") MIP x MIP	12	1.004	455.4
G200-3131-72	1/2" OD (3/8" ID) 1/2" x 1/2" SS (72") MIP x MIP	12	1.132	513.6



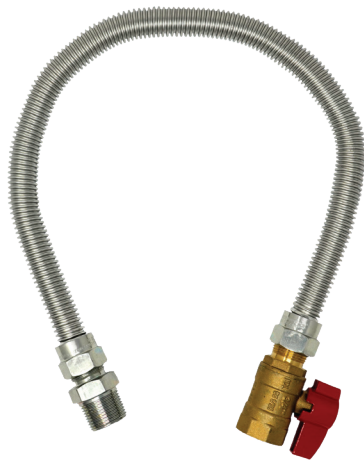
Coated Stainless Steel Flexible Gas Connectors 1/2" OD (3/8" ID) 1/2" MIP x 1/2" MIP

PART #	OD - DESCRIPTION	BOX QTY	WT (LB)	WT (G)
G203-3131-12	1/2" OD (3/8" ID) 1/2" x 1/2" SS Coated (12") MIP x MIP	25	0.515	233.6
G203-3131-18	1/2" OD (3/8" ID) 1/2" x 1/2" SS Coated (18") MIP x MIP	25	0.583	264.5
G203-3131-24	1/2" OD (3/8" ID) 1/2" x 1/2" SS Coated (24") MIP x MIP	25	0.651	295.4
G203-3131-30	1/2" OD (3/8" ID) 1/2" x 1/2" SS Coated (30") MIP x MIP	25	0.720	326.4
G203-3131-36	1/2" OD (3/8" ID) 1/2" x 1/2" SS Coated (36") MIP x MIP	25	0.788	357.3
G203-3131-48	1/2" OD (3/8" ID) 1/2" x 1/2" SS Coated (48") MIP x MIP	25	0.924	419.2



Coated Stainless Steel Flexible Gas Connectors 1/2" OD (3/8" ID) 1/2" MIP x 1/2" MIP - Continued

PART #	OD - DESCRIPTION	BOX QTY	WT (LB)	WT (G)
G203-3131-60	1/2" OD (3/8" ID) 1/2" x 1/2" SS Coated (60") MIP x MIP	12	1.061	481.0
G203-3131-72	1/2" OD (3/8" ID) 1/2" x 1/2" SS Coated (72") MIP x MIP	12	1.197	542.9



Stainless Steel Flexible Gas Connectors 5/8" OD (1/2" ID) 3/4" MIP X 3/4" FIP Valve

PART #	OD - DESCRIPTION	BOX QTY	WT (LB)	WT (G)
G300-4145-12	5/8" OD (1/2" ID) 3/4" x 3/4" SS (12") MIP x FIP Valve	25	1.066	483.4
G300-4145-18	5/8" OD (1/2" ID) 3/4" x 3/4" SS (18") MIP x FIP Valve	25	1.144	519.1
G300-4145-24	5/8" OD (1/2" ID) 3/4" x 3/4" SS (24") MIP x FIP Valve	25	1.223	554.8
G300-4145-30	5/8" OD (1/2" ID) 3/4" x 3/4" SS (30") MIP x FIP Valve	25	1.302	590.4
G300-4145-36	5/8" OD (1/2" ID) 3/4" x 3/4" SS (36") MIP x FIP Valve	25	1.380	626.1
G300-4145-48	5/8" OD (1/2" ID) 3/4" x 3/4" SS (48") MIP x FIP Valve	25	1.538	697.4
G300-4145-60	5/8" OD (1/2" ID) 3/4" x 3/4" SS (60") MIP x FIP Valve	12	1.695	768.7
G300-4145-72	5/8" OD (1/2" ID) 3/4" x 3/4" SS (72") MIP x FIP Valve	12	1.852	840.1



Stainless Steel Flexible Gas Connectors 5/8" OD (1/2" ID) 1/2" FIP x 1/2" FIP

PART #	OD - DESCRIPTION	BOX QTY	WT (LB)	WT (G)
G300-3232-12	5/8" OD (1/2" ID) 1/2" x 1/2" SS (12") FIP x FIP	25	0.598	271.4



Stainless Steel Flexible Gas Connectors 5/8" OD (1/2" ID) 1/2" FIP x 1/2" FIP - Continued

PART #	OD - DESCRIPTION	BOX QTY	WT (LB)	WT (G)
G300-3232-18	5/8" OD (1/2" ID) 1/2" x 1/2" SS (18") FIP x FIP	25	0.677	307.1
G300-3232-24	5/8" OD (1/2" ID) 1/2" x 1/2" SS (24") FIP x FIP	25	0.756	342.8
G300-3232-30	5/8" OD (1/2" ID) 1/2" x 1/2" SS (30") FIP x FIP	25	0.834	378.4
G300-3232-36	5/8" OD (1/2" ID) 1/2" x 1/2" SS (36") FIP x FIP	25	0.913	414.1
G300-3232-48	5/8" OD (1/2" ID) 1/2" x 1/2" SS (48") FIP x FIP	25	1.070	485.4
G300-3232-60	5/8" OD (1/2" ID) 1/2" x 1/2" SS (60") FIP x FIP	12	1.227	556.7
G300-3232-72	5/8" OD (1/2" ID) 1/2" x 1/2" SS (72") FIP x FIP	12	1.385	628.1



Stainless Steel Flexible Gas Connectors 5/8" OD (1/2" ID) 3/4" FIP x 3/4" FIP

PART #	OD - DESCRIPTION	BOX QTY	WT (LB)	WT (G)
G300-4242-12	5/8" OD (1/2" ID) 3/4" x 3/4" SS (12") FIP x FIP	25	0.731	331.4
G300-4242-18	5/8" OD (1/2" ID) 3/4" x 3/4" SS (18") FIP x FIP	25	0.809	367.1
G300-4242-24	5/8" OD (1/2" ID) 3/4" x 3/4" SS (24") FIP x FIP	25	0.888	402.8
G300-4242-30	5/8" OD (1/2" ID) 3/4" x 3/4" SS (30") FIP x FIP	25	0.967	438.4
G300-4242-36	5/8" OD (1/2" ID) 3/4" x 3/4" SS (36") FIP x FIP	25	1.045	474.1
G300-4242-48	5/8" OD (1/2" ID) 3/4" x 3/4" SS (48") FIP x FIP	25	1.202	545.4



Stainless Steel Flexible Gas Connectors 5/8" OD (1/2" ID) 3/4" FIP x 3/4" FIP - Continued

PART #	OD - DESCRIPTION	BOX QTY	WT (LB)	WT (G)
G300-4242-60	5/8" OD (1/2" ID) 3/4" x 3/4" SS (60") FIP x FIP	12	1.360	616.7
G300-4242-72	5/8" OD (1/2" ID) 3/4" x 3/4" SS (72") FIP x FIP	12	1.517	688.1



Coated Stainless Steel Flexible Gas Connectors 5/8" OD (1/2" ID) 1/2" FIP X 1/2" FIP

PART #	OD - DESCRIPTION	BOX QTY	WT (LB)	WT (G)
G303-3232-12	5/8" OD (1/2" ID) 3/4" x 1/2" SS Coated (12") FIP x FIP	25	0.616	279.2
G303-3232-18	5/8" OD (1/2" ID) 3/4" x 1/2" SS Coated (18") FIP x FIP	25	0.699	317.2
G303-3232-24	5/8" OD (1/2" ID) 3/4" x 1/2" SS Coated (24") FIP x FIP	25	0.783	355.2
G303-3232-30	5/8" OD (1/2" ID) 3/4" x 1/2" SS Coated (30") FIP x FIP	25	0.867	393.1
G303-3232-36	5/8" OD (1/2" ID) 3/4" x 1/2" SS Coated (36") FIP x FIP	25	0.950	431.0
G303-3232-48	SS Coated Gas Connector 48" x 5/8" OD (1/2" ID) 1/2" FIP x 1/2" FIP	25	1.118	507.0
G303-3232-60	SS Coated Gas Connector 60" x 5/8" OD (1/2" ID) 1/2" FIP x 1/2" FIP	12	1.285	582.9
G303-3232-72	SS Coated Gas Connector 72" x 5/8" OD (1/2" ID) 1/2" FIP x 1/2" FIP	12	1.452	658.8



Coated Stainless Steel Flexible Gas Connectors 5/8" OD (1/2" ID) 3/4" FIP X 1/2" FIP

PART #	OD - DESCRIPTION	BOX QTY	WT (LB)	WT (G)
G303-3242-12	5/8" OD (1/2" ID) 3/4" x 1/2" SS Coated (12") FIP x FIP	25	0.662	300.2



Coated Stainless Steel Flexible Gas Connectors 5/8" OD (1/2" ID) 3/4" FIP X 1/2" FIP - Continued

PART #	OD - DESCRIPTION	BOX QTY	WT (LB)	WT (G)
G303-3242-18	5/8" OD (1/2" ID) 3/4" x 1/2" SS Coated (18") FIP x FIP	25	0.746	338.2
G303-3242-24	5/8" OD (1/2" ID) 3/4" x 1/2" SS Coated (24") FIP x FIP	25	0.829	376.2
G303-3242-30	5/8" OD (1/2" ID) 3/4" x 1/2" SS Coated (30") FIP x FIP	25	0.913	414.1
G303-3242-36	5/8" OD (1/2" ID) 3/4" x 1/2" SS Coated (36") FIP x FIP	25	0.997	452.0
G303-3242-48	5/8" OD (1/2" ID) 3/4" x 1/2" SS Coated (48") FIP x FIP	25	1.164	528.0
G303-3242-60	5/8" OD (1/2" ID) 3/4" x 1/2" SS Coated (60") FIP x FIP	12	1.331	603.9
G303-3242-72	5/8" OD (1/2" ID) 3/4" x 1/2" SS Coated (72") FIP x FIP	12	1.499	679.8



Coated Stainless Steel Flexible Gas Connectors 5/8" OD (1/2" ID) 3/4" FIP X 3/4" FIP

PART #	OD - DESCRIPTION	BOX QTY	WT (LB)	WT (G)
G303-4242-12	5/8" OD (1/2" ID) 3/4" x 3/4" SS Coated (12") FIP x FIP	25	0.708	321.2
G303-4242-18	5/8" OD (1/2" ID) 3/4" x 3/4" SS Coated (18") FIP x FIP	25	0.792	359.2
G303-4242-24	5/8" OD (1/2" ID) 3/4" x 3/4" SS Coated (24") FIP x FIP	25	0.876	397.2
G303-4242-30	5/8" OD (1/2" ID) 3/4" x 3/4" SS Coated (30") FIP x FIP	25	0.959	435.1
G303-4242-36	5/8" OD (1/2" ID) 3/4" x 3/4" SS Coated (36") FIP x FIP	25	1.043	473.1
G303-4242-48	5/8" OD (1/2" ID) 3/4" x 3/4" SS Coated (48") FIP x FIP	25	1.210	548.9



**Coated Stainless Steel Flexible Gas Connectors 5/8" OD (1/2" ID)
3/4" FIP X 3/4" FIP - Continued**

PART #	OD - DESCRIPTION	BOX QTY	WT (LB)	WT (G)
G303-4242-60	5/8" OD (1/2" ID) 3/4" x 3/4" SS Coated (60") FIP x FIP	12	1.378	624.9
G303-4242-72	5/8" OD (1/2" ID) 3/4" x 3/4" SS Coated (72") FIP x FIP	12	1.545	700.8



**Stainless Steel Flexible Gas Connectors 5/8" OD (1/2" ID) 1/2" FIP x
1/2" MIP**

PART #	OD - DESCRIPTION	BOX QTY	WT (LB)	WT (G)
G300-3132-12	5/8" OD (1/2" ID) 1/2" x 1/2" SS (12") FIP x MIP	25	0.614	278.5
G300-3132-18	5/8" OD (1/2" ID) 1/2" x 1/2" SS (18") FIP x MIP	25	0.693	314.3
G300-3132-24	5/8" OD (1/2" ID) 1/2" x 1/2" SS (24") FIP x MIP	25	0.771	349.7
G300-3132-30	5/8" OD (1/2" ID) 1/2" x 1/2" SS (30") FIP x MIP	25	0.85	385.6
G300-3132-36	5/8" OD (1/2" ID) 1/2" x 1/2" SS (36") FIP x MIP	25	0.928	420.9
G300-3132-48	5/8" OD (1/2" ID) 1/2" x 1/2" SS (48") FIP x MIP	25	1.086	492.6
G300-3132-60	5/8" OD (1/2" ID) 1/2" x 1/2" SS (60") FIP x MIP	12	1.243	563.8
G300-3132-72	5/8" OD (1/2" ID) 1/2" x 1/2" SS (72") FIP x MIP	12	1.400	635.0



**Coated Stainless Steel Flexible Gas Connectors 5/8" OD (1/2" ID) 3/4"
FIP x 1/2" MIP**

PART #	OD - DESCRIPTION	BOX QTY	WT (LB)	WT (G)
G300-3142-12	5/8" OD (1/2" ID) 3/4" x 1/2" SS (12") FIP x MIP	25	0.680	308.4



Coated Stainless Steel Flexible Gas Connectors 5/8" OD (1/2" ID) 3/4" FIP x 1/2" MIP - *Continued*

PART #	OD - DESCRIPTION	BOX QTY	WT (LB)	WT (G)
G300-3142-18	5/8" OD (1/2" ID) 3/4" x 1/2" SS (18") FIP x MIP	25	0.759	344.3
G300-3142-24	5/8" OD (1/2" ID) 3/4" x 1/2" SS (24") FIP x MIP	25	0.837	379.7
G300-3142-30	5/8" OD (1/2" ID) 3/4" x 1/2" SS (30") FIP x MIP	25	0.916	415.5
G300-3142-36	5/8" OD (1/2" ID) 3/4" x 1/2" SS (36") FIP x MIP	25	0.995	451.3
G300-3142-48	5/8" OD (1/2" ID) 3/4" x 1/2" SS (48") FIP x MIP	25	1.152	522.5
G300-3142-60	5/8" OD (1/2" ID) 3/4" x 1/2" SS (60") FIP x MIP	12	1.309	593.8
G300-3142-72	5/8" OD (1/2" ID) 3/4" x 1/2" SS (72") FIP x MIP	12	1.466	665.0



Stainless Steel Flexible Gas Connectors 5/8" OD (1/2" ID) 3/4" FIP x 3/4" MIP

PART #	OD - DESCRIPTION	BOX QTY	WT (LB)	WT (G)
G300-4142-12	5/8" OD (1/2" ID) 3/4" x 3/4" SS (12") FIP x MIP	25	0.753	341.6
G300-4142-18	5/8" OD (1/2" ID) 3/4" x 3/4" SS (18") FIP x MIP	25	0.831	376.9
G300-4142-24	5/8" OD (1/2" ID) 3/4" x 3/4" SS (24") FIP x MIP	25	0.91	412.8
G300-4142-30	5/8" OD (1/2" ID) 3/4" x 3/4" SS (30") FIP x MIP	25	0.989	448.6
G300-4142-36	5/8" OD (1/2" ID) 3/4" x 3/4" SS (36") FIP x MIP	25	1.067	484.0
G300-4142-48	5/8" OD (1/2" ID) 3/4" x 3/4" SS (48") FIP x MIP	25	1.225	555.7



Stainless Steel Flexible Gas Connectors 5/8" OD (1/2" ID) 3/4" FIP x 3/4" MIP - Continued

PART #	OD - DESCRIPTION	BOX QTY	WT (LB)	WT (G)
G300-4142-60	5/8" OD (1/2" ID) 3/4" x 3/4" SS (60") FIP x MIP	12	1.382	626.9
G300-4142-72	5/8" OD (1/2" ID) 3/4" x 3/4" SS (72") FIP x MIP	12	1.539	698.1



Coated Stainless Steel Flexible Gas Connectors 5/8" OD (1/2" ID) 1/2" FIP x 1/2" MIP

PART #	OD - DESCRIPTION	BOX QTY	WT (LB)	WT (G)
G303-3132-12	5/8" OD (1/2" ID) 1/2" x 1/2" SS Coated (12") FIP x MIP	25	0.644	292.2
G303-3132-18	5/8" OD (1/2" ID) 1/2" x 1/2" SS Coated (18") FIP x MIP	25	0.728	330.2
G303-3132-24	5/8" OD (1/2" ID) 1/2" x 1/2" SS Coated (24") FIP x MIP	25	0.812	368.2
G303-3132-30	5/8" OD (1/2" ID) 1/2" x 1/2" SS Coated (30") FIP x MIP	25	0.895	406.1
G303-3132-36	5/8" OD (1/2" ID) 1/2" x 1/2" SS Coated (36") FIP x MIP	25	0.979	444.1
G303-3132-48	5/8" OD (1/2" ID) 1/2" x 1/2" SS Coated (48") FIP x MIP	25	1.146	520.0
G303-3132-60	5/8" OD (1/2" ID) 1/2" x 1/2" SS Coated (60") FIP x MIP	12	1.314	595.8
G303-3132-72	5/8" OD (1/2" ID) 1/2" x 1/2" SS Coated (72") FIP x MIP	12	1.481	671.8



Coated Stainless Steel Flexible Gas Connectors 5/8" OD (1/2" ID) 3/4" FIP x 1/2" MIP

PART #	OD - DESCRIPTION	BOX QTY	WT (LB)	WT (G)
G303-3142-12	5/8" OD (1/2" ID) 3/4" x 1/2" SS Coated (12") FIP x MIP	25	0.532	241.3



Coated Stainless Steel Flexible Gas Connectors 5/8" OD (1/2" ID) 3/4" FIP X 1/2" MIP - *Continued*

PART #	OD - DESCRIPTION	BOX QTY	WT (LB)	WT (G)
G303-3142-18	5/8" OD (1/2" ID) 3/4" x 1/2" SS Coated (18") FIP x MIP	25	0.616	279.2
G303-3142-24	5/8" OD (1/2" ID) 3/4" x 1/2" SS Coated (24") FIP x MIP	25	0.699	317.2
G303-3142-30	5/8" OD (1/2" ID) 3/4" x 1/2" SS Coated (30") FIP x MIP	25	0.783	355.1
G303-3142-36	5/8" OD (1/2" ID) 3/4" x 1/2" SS Coated (36") FIP x MIP	25	0.867	393.0
G303-3142-48	5/8" OD (1/2" ID) 3/4" x 1/2" SS Coated (48") FIP x MIP	25	1.034	469.0
G303-3142-60	5/8" OD (1/2" ID) 3/4" x 1/2" SS Coated (60") FIP x MIP	12	1.201	544.9
G303-3142-72	5/8" OD (1/2" ID) 3/4" x 1/2" SS Coated (72") FIP x MIP	12	1.369	620.7



Coated Stainless Steel Flexible Gas Connectors 5/8" OD (1/2" ID) 1/2" FIP X 3/4" MIP

PART #	OD - DESCRIPTION	BOX QTY	WT (LB)	WT (G)
G303-4132-12	5/8" OD (1/2" ID) 1/2" x 3/4" SS Coated (12") FIP x MIP	25	0.565	256.2
G303-4132-18	5/8" OD (1/2" ID) 1/2" x 3/4" SS Coated (18") FIP x MIP	25	0.649	294.2
G303-4132-24	5/8" OD (1/2" ID) 1/2" x 3/4" SS Coated (24") FIP x MIP	25	0.732	332.2
G303-4132-30	5/8" OD (1/2" ID) 1/2" x 3/4" SS Coated (30") FIP x MIP	25	0.816	370.1
G303-4132-36	5/8" OD (1/2" ID) 1/2" x 3/4" SS Coated (36") FIP x MIP	25	0.900	408.1
G303-4132-48	5/8" OD (1/2" ID) 1/2" x 3/4" SS Coated (48") FIP x MIP	25	1.067	483.9



Coated Stainless Steel Flexible Gas Connectors 5/8" OD (1/2" ID) 1/2" FIP X 3/4" MIP - Continued

PART #	OD - DESCRIPTION	BOX QTY	WT (LB)	WT (G)
G303-4132-60	5/8" OD (1/2" ID) 1/2" x 3/4" SS Coated (60") FIP x MIP	12	1.234	559.9
G303-4132-72	5/8" OD (1/2" ID) 1/2" x 3/4" SS Coated (72") FIP x MIP	12	1.402	635.8



Coated Stainless Steel Flexible Gas Connectors 5/8" OD (1/2" ID) 3/4" FIP X 3/4" MIP

PART #	OD - DESCRIPTION	BOX QTY	WT (LB)	WT (G)
G303-4142-12	5/8" OD (1/2" ID) 3/4" x 3/4" SS Coated (12") FIP x MIP	25	0.611	277.2
G303-4142-18	5/8" OD (1/2" ID) 3/4" x 3/4" SS Coated (18") FIP x MIP	25	0.695	315.2
G303-4142-24	5/8" OD (1/2" ID) 3/4" x 3/4" SS Coated (24") FIP x MIP	25	0.779	353.2
G303-4142-30	5/8" OD (1/2" ID) 3/4" x 3/4" SS Coated (30") FIP x MIP	25	0.862	391.1
G303-4142-36	5/8" OD (1/2" ID) 3/4" x 3/4" SS Coated (36") FIP x MIP	25	0.946	429.1
G303-4142-48	5/8" OD (1/2" ID) 3/4" x 3/4" SS Coated (48") FIP x MIP	25	1.113	504.9
G303-4142-60	5/8" OD (1/2" ID) 3/4" x 3/4" SS Coated (60") FIP x MIP	12	1.281	580.9
G303-4142-72	5/8" OD (1/2" ID) 3/4" x 3/4" SS Coated (72") FIP x MIP	12	1.448	656.8



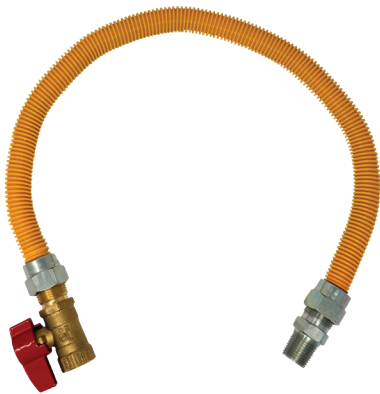
Stainless Steel Flexible Gas Connectors 5/8" OD (1/2" ID) 1/2" MIP X 3/4" FIP Valve

PART #	OD - DESCRIPTION	BOX QTY	WT (LB)	WT (G)
G300-3146-12	5/8" OD (1/2" ID) 1/2" x 3/4" SS (12") MIP x FIP Valve (Ang)	25	1.209	548.4



Stainless Steel Flexible Gas Connectors 5/8" OD (1/2" ID) 1/2" MIP X 3/4" FIP Valve - *Continued*

PART #	OD - DESCRIPTION	BOX QTY	WT (LB)	WT (G)
G300-3146-18	5/8" OD (1/2" ID) 1/2" x 3/4" SS (18") MIP x FIP Valve (Ang)	25	1.288	584.1
G300-3146-24	5/8" OD (1/2" ID) 1/2" x 3/4" SS (24") MIP x FIP Valve (Ang)	25	1.445	655.4
G300-3146-30	5/8" OD (1/2" ID) 1/2" x 3/4" SS (30") MIP x FIP Valve (Ang)	25	1.602	726.7
G300-3146-36	5/8" OD (1/2" ID) 1/2" x 3/4" SS (36") MIP x FIP Valve (Ang)	25	1.760	798.1
G300-3146-48	5/8" OD (1/2" ID) 1/2" x 3/4" SS (48") MIP x FIP Valve (Ang)	25	0.126	57.0
G300-3146-60	5/8" OD (1/2" ID) 1/2" x 3/4" SS (60") MIP x FIP Valve (Ang)	12	1.112	504.4
G300-3146-72	5/8" OD (1/2" ID) 1/2" x 3/4" SS (72") MIP x FIP Valve (Ang)	12	1.191	540.1



Coated Stainless Steel Flexible Gas Connectors 5/8" OD (1/2" ID) 1/2" MIP X 1/2" FIP Valve

PART #	OD - DESCRIPTION	BOX QTY	WT (LB)	WT (G)
G303-3135-12	5/8" OD (1/2" ID) 1/2" x 1/2" Coated (12") MIP x FIP Valve	25	0.880	399.3
G303-3135-18	5/8" OD (1/2" ID) 1/2" x 1/2" Coated (18") MIP x FIP Valve	25	0.964	437.2
G303-3135-24	5/8" OD (1/2" ID) 1/2" x 1/2" Coated (24") MIP x FIP Valve	25	1.048	475.1
G303-3135-30	5/8" OD (1/2" ID) 1/2" x 1/2" Coated (30") MIP x FIP Valve	25	1.131	513.1
G303-3135-36	5/8" OD (1/2" ID) 1/2" x 1/2" Coated (36") MIP x FIP Valve	25	1.215	551.1
G303-3135-48	5/8" OD (1/2" ID) 1/2" x 1/2" Coated (48") MIP x FIP Valve	25	1.382	627.0



Coated Stainless Steel Flexible Gas Connectors 5/8" OD (1/2" ID) 1/2" MIP X 1/2" FIP Valve - *Continued*

PART #	OD - DESCRIPTION	BOX QTY	WT (LB)	WT (G)
G303-3135-60	5/8" OD (1/2" ID) 1/2" x 1/2" Coated (60") MIP x FIP Valve	12	1.550	702.8
G303-3135-72	5/8" OD (1/2" ID) 1/2" x 1/2" Coated (72") MIP x FIP Valve	12	1.717	778.7



Coated Stainless Steel Flexible Gas Connectors 5/8" OD (1/2" ID) 1/2" MIP X 3/4" FIP Valve

PART #	OD - DESCRIPTION	BOX QTY	WT (LB)	WT (G)
G303-3145-12	5/8" OD (1/2" ID) 1/2" x 3/4" Coated (12") MIP x FIP Valve	25	1.019	462.3
G303-3145-18	5/8" OD (1/2" ID) 1/2" x 3/4" Coated (18") MIP x FIP Valve	25	1.103	500.2
G303-3145-24	5/8" OD (1/2" ID) 1/2" x 3/4" Coated (24") MIP x FIP Valve	25	1.186	538.1
G303-3145-30	5/8" OD (1/2" ID) 1/2" x 3/4" Coated (30") MIP x FIP Valve	25	1.270	576.1
G303-3145-36	5/8" OD (1/2" ID) 1/2" x 3/4" Coated (36") MIP x FIP Valve	25	1.354	614.1
G303-3145-48	5/8" OD (1/2" ID) 1/2" x 3/4" Coated (48") MIP x FIP Valve	25	1.521	690.0
G303-3145-60	5/8" OD (1/2" ID) 1/2" x 3/4" Coated (60") MIP x FIP Valve	12	1.688	765.8
G303-3145-72	5/8" OD (1/2" ID) 1/2" x 3/4" Coated (72") MIP x FIP Valve	12	1.856	841.7



Stainless Steel Flexible Gas Connectors 5/8" OD (1/2" ID) 1/2" MIP X 1/2" FIP Valve

PART #	OD - DESCRIPTION	BOX QTY	WT (LB)	WT (G)
G300-3135-12	5/8" OD (1/2" ID) 1/2" x 1/2" SS (12") MIP x FIP Valve	25	0.848	384.4



Stainless Steel Flexible Gas Connectors 5/8" OD (1/2" ID) 1/2" MIP X 1/2" FIP Valve - Continued

PART #	OD - DESCRIPTION	BOX QTY	WT (LB)	WT (G)
G300-3135-18	5/8" OD (1/2" ID) 1/2" x 1/2" SS (18") MIP x FIP Valve	25	0.926	420.1
G300-3135-24	5/8" OD (1/2" ID) 1/2" x 1/2" SS (24") MIP x FIP Valve	25	1.005	455.8
G300-3135-30	5/8" OD (1/2" ID) 1/2" x 1/2" SS (30") MIP x FIP Valve	25	1.083	491.4
G300-3135-36	5/8" OD (1/2" ID) 1/2" x 1/2" SS (36") MIP x FIP Valve	25	1.162	527.1
G300-3135-48	5/8" OD (1/2" ID) 1/2" x 1/2" SS (48") MIP x FIP Valve	25	1.319	598.4
G300-3135-60	5/8" OD (1/2" ID) 1/2" x 1/2" SS (60") MIP x FIP Valve	12	1.477	669.7
G300-3135-72	5/8" OD (1/2" ID) 1/2" x 1/2" SS (72") MIP x FIP Valve	12	1.634	741.1



Stainless Steel Flexible Gas Connectors 5/8" OD (1/2" ID) 1/2" MIP X 3/4" FIP Valve

PART #	OD - DESCRIPTION	BOX QTY	WT (LB)	WT (G)
G300-3145-12	5/8" OD (1/2" ID) 1/2" x 3/4" SS (12") MIP x FIP Valve	25	0.986	447.4
G300-3145-18	5/8" OD (1/2" ID) 1/2" x 3/4" SS (18") MIP x FIP Valve	25	1.065	483.1
G300-3145-24	5/8" OD (1/2" ID) 1/2" x 3/4" SS (24") MIP x FIP Valve	25	1.144	518.8
G300-3145-30	5/8" OD (1/2" ID) 1/2" x 3/4" SS (30") MIP x FIP Valve	25	1.222	554.4
G300-3145-36	5/8" OD (1/2" ID) 1/2" x 3/4" SS (36") MIP x FIP Valve	25	1.301	590.1
G300-3145-48	5/8" OD (1/2" ID) 1/2" x 3/4" SS (48") MIP x FIP Valve	25	1.458	661.4



Stainless Steel Flexible Gas Connectors 5/8" OD (1/2" ID) 1/2" MIP X 3/4" FIP Valve - *Continued*

PART #	OD - DESCRIPTION	BOX QTY	WT (LB)	WT (G)
G300-3145-60	5/8" OD (1/2" ID) 1/2" x 3/4" SS (60") MIP x FIP Valve	12	1.615	732.7
G300-3145-72	5/8" OD (1/2" ID) 1/2" x 3/4" SS (72") MIP x FIP Valve	12	1.773	804.1



Stainless Steel Flexible Gas Connectors 5/8" OD (1/2" ID) 3/4" FIP X 3/4" FIP Valve

PART #	OD - DESCRIPTION	BOX QTY	WT (LB)	WT (G)
G300-4245-12	5/8" OD (1/2" ID) 3/4" x 3/4" SS (12") FIP x FIP Valve	25	1.004	455.5
G300-4245-18	5/8" OD (1/2" ID) 3/4" x 3/4" SS (18") FIP x FIP Valve	25	1.083	491.1
G300-4245-24	5/8" OD (1/2" ID) 3/4" x 3/4" SS (24") FIP x FIP Valve	25	1.161	526.8
G300-4245-30	5/8" OD (1/2" ID) 3/4" x 3/4" SS (30") FIP x FIP Valve	25	1.240	562.4
G300-4245-36	SS Gas Connector 36" x 5/8" OD (1/2" ID) 3/4" FIP x 3/4" FIP Valve	25	1.319	598.1
G300-4245-48	SS Gas Connector 48" x 5/8" OD (1/2" ID) 3/4" FIP x 3/4" FIP Valve	25	1.476	669.4
G300-4245-60	SS Gas Connector 60" x 5/8" OD (1/2" ID) 3/4" FIP x 3/4" FIP Valve	12	1.633	740.8
G300-4245-72	SS Gas Connector 72" x 5/8" OD (1/2" ID) 3/4" FIP x 3/4" FIP Valve	12	1.790	812.1



Stainless Steel Flexible Gas Connectors 5/8" OD (1/2" ID) 1/2" MIP x 1/2" MIP

PART #	OD - DESCRIPTION	BOX QTY	WT (LB)	WT (G)
G300-3131-12	5/8" OD (1/2" ID) 1/2" x 1/2" SS (12") MIP x MIP	25	0.629	285.4



Stainless Steel Flexible Gas Connectors 5/8" OD (1/2" ID) 1/2" MIP x 1/2" MIP - Continued

PART #	OD - DESCRIPTION	BOX QTY	WT (LB)	WT (G)
G300-3131-18	5/8" OD (1/2" ID) 1/2" x 1/2" SS (18") MIP x MIP	25	0.708	321.1
G300-3131-24	5/8" OD (1/2" ID) 1/2" x 1/2" SS (24") MIP x MIP	25	0.787	356.8
G300-3131-30	5/8" OD (1/2" ID) 1/2" x 1/2" SS (30") MIP x MIP	25	0.865	392.4
G300-3131-36	5/8" OD (1/2" ID) 1/2" x 1/2" SS (36") MIP x MIP	25	0.944	428.1
G300-3131-48	5/8" OD (1/2" ID) 1/2" x 1/2" SS (48") MIP x MIP	25	1.101	499.4
G300-3131-60	5/8" OD (1/2" ID) 1/2" x 1/2" SS (60") MIP x MIP	12	1.258	570.8
G300-3131-72	5/8" OD (1/2" ID) 1/2" x 1/2" SS (72") MIP x MIP	12	1.416	642.1



Stainless Steel Flexible Gas Connectors 5/8" OD (1/2" ID) 1/2" MIP x 3/4" MIP

PART #	OD - DESCRIPTION	BOX QTY	WT (LB)	WT (G)
G300-3141-12	5/8" OD (1/2" ID) 1/2" x 3/4" SS (12") MIP x MIP	25	0.702	318.4
G300-3141-18	5/8" OD (1/2" ID) 1/2" x 3/4" SS (18") MIP x MIP	25	0.781	354.1
G300-3141-24	5/8" OD (1/2" ID) 1/2" x 3/4" SS (24") MIP x MIP	25	0.859	389.8
G300-3141-30	5/8" OD (1/2" ID) 1/2" x 3/4" SS (30") MIP x MIP	25	0.938	425.4
G300-3141-36	5/8" OD (1/2" ID) 1/2" x 3/4" SS (36") MIP x MIP	25	1.017	461.1
G300-3141-48	5/8" OD (1/2" ID) 1/2" x 3/4" SS (48") MIP x MIP	25	1.174	532.4



Stainless Steel Flexible Gas Connectors 5/8" OD (1/2" ID) 1/2" MIP x 3/4" MIP - Continued

PART #	OD - DESCRIPTION	BOX QTY	WT (LB)	WT (G)
G300-3141-60	5/8" OD (1/2" ID) 1/2" x 3/4" SS (60") MIP x MIP	12	1.331	603.7
G300-3141-72	5/8" OD (1/2" ID) 1/2" x 3/4" SS (72") MIP x MIP	12	1.488	675.1



Stainless Steel Flexible Gas Connectors 5/8" OD (1/2" ID) 3/4" MIP x 3/4" MIP

PART #	OD - DESCRIPTION	BOX QTY	WT (LB)	WT (G)
G300-4141-12	5/8" OD (1/2" ID) 3/4" x 3/4" SS (12") MIP x MIP	25	0.775	351.4
G300-4141-18	5/8" OD (1/2" ID) 3/4" x 3/4" SS (18") MIP x MIP	25	0.853	387.1
G300-4141-24	5/8" OD (1/2" ID) 3/4" x 3/4" SS (24") MIP x MIP	25	0.932	422.7
G300-4141-30	5/8" OD (1/2" ID) 3/4" x 3/4" SS (30") MIP x MIP	25	1.011	458.4
G300-4141-36	5/8" OD (1/2" ID) 3/4" x 3/4" SS (36") MIP x MIP	25	1.089	494.1
G300-4141-48	5/8" OD (1/2" ID) 3/4" x 3/4" SS (48") MIP x MIP	25	1.247	565.4
G300-4141-60	5/8" OD (1/2" ID) 3/4" x 3/4" SS (60") MIP x MIP	12	1.404	636.8
G300-4141-72	5/8" OD (1/2" ID) 3/4" x 3/4" SS (72") MIP x MIP	12	1.561	708.1



Coated Stainless Steel Flexible Gas Connectors 5/8" OD (1/2" ID) 1/2" MIP x 1/2" MIP

PART #	OD - DESCRIPTION	BOX QTY	WT (LB)	WT (G)
G303-3131-12	5/8" OD (1/2" ID) 1/2" x 1/2" SS Coated (12") MIP x MIP	25	0.673	305.3



Stainless Steel Flexible Gas Connectors 5/8" OD (1/2" ID) 1/2" MIP x 1/2" MIP - Continued

PART #	OD - DESCRIPTION	BOX QTY	WT (LB)	WT (G)
G303-3131-18	5/8" OD (1/2" ID) 1/2" x 1/2" SS Coated (18") MIP x MIP	25	0.757	343.2
G303-3131-24	5/8" OD (1/2" ID) 1/2" x 1/2" SS Coated (24") MIP x MIP	25	0.840	381.2
G303-3131-30	5/8" OD (1/2" ID) 1/2" x 1/2" SS Coated (30") MIP x MIP	25	0.924	419.1
G303-3131-36	5/8" OD (1/2" ID) 1/2" x 1/2" SS Coated (36") MIP x MIP	25	1.008	457.0
G303-3131-48	5/8" OD (1/2" ID) 1/2" x 1/2" SS Coated (48") MIP x MIP	25	1.175	533.0
G303-3131-60	5/8" OD (1/2" ID) 1/2" x 1/2" SS Coated (60") MIP x MIP	12	1.342	608.9
G303-3131-72	5/8" OD (1/2" ID) 1/2" x 1/2" SS Coated (72") MIP x MIP	12	1.510	684.7



Stainless Steel Flexible Gas Connectors 5/8" OD (1/2" ID) 3/4" MIP x 1/2" MIP

PART #	OD - DESCRIPTION	BOX QTY	WT (LB)	WT (G)
G303-3141-12	5/8" OD (1/2" ID) 3/4" x 1/2" SS Coated (12") MIP x MIP	25	0.752	341.2
G303-3141-18	5/8" OD (1/2" ID) 3/4" x 1/2" SS Coated (18") MIP x MIP	25	0.836	379.2
G303-3141-24	5/8" OD (1/2" ID) 3/4" x 1/2" SS Coated (24") MIP x MIP	25	0.920	417.2
G303-3141-30	5/8" OD (1/2" ID) 3/4" x 1/2" SS Coated (30") MIP x MIP	25	1.003	455.1
G303-3141-36	5/8" OD (1/2" ID) 3/4" x 1/2" SS Coated (36") MIP x MIP	25	1.087	493.1
G303-3141-48	5/8" OD (1/2" ID) 3/4" x 1/2" SS Coated (48") MIP x MIP	25	1.254	568.9



Stainless Steel Flexible Gas Connectors 5/8" OD (1/2" ID) 3/4" MIP x 1/2" MIP - Continued

PART #	OD - DESCRIPTION	BOX QTY	WT (LB)	WT (G)
G303-3141-60	5/8" OD (1/2" ID) 3/4" x 1/2" SS Coated (60") MIP x MIP	12	1.422	644.9
G303-3141-72	5/8" OD (1/2" ID) 3/4" x 1/2" SS Coated (72") MIP x MIP	12	1.589	720.8



Coated Stainless Steel Flexible Gas Connectors 5/8" OD (1/2" ID) 3/4" MIP X 3/4" MIP

PART #	OD - DESCRIPTION	BOX QTY	WT (LB)	WT (G)
G303-4141-12	5/8" OD (1/2" ID) 3/4" x 3/4" SS Coated (12") MIP x MIP	25	0.832	377.3
G303-4141-18	5/8" OD (1/2" ID) 3/4" x 3/4" SS Coated (18") MIP x MIP	25	0.915	415.2
G303-4141-24	5/8" OD (1/2" ID) 3/4" x 3/4" SS Coated (24") MIP x MIP	25	0.999	453.1
G303-4141-30	5/8" OD (1/2" ID) 3/4" x 3/4" SS Coated (30") MIP x MIP	25	1.083	491.1
G303-4141-36	5/8" OD (1/2" ID) 3/4" x 3/4" SS Coated (36") MIP x MIP	25	1.166	529.1
G303-4141-48	5/8" OD (1/2" ID) 3/4" x 3/4" SS Coated (48") MIP x MIP	25	1.334	605.0
G303-4141-60	5/8" OD (1/2" ID) 3/4" x 3/4" SS Coated (60") MIP x MIP	12	1.501	680.8
G303-4141-72	5/8" OD (1/2" ID) 3/4" x 3/4" SS Coated (72") MIP x MIP	12	1.668	756.7



Stainless Steel Flexible Gas Connectors 1" OD (3/4" ID) 3/4" FIP X 3/4" FIP

PART #	OD - DESCRIPTION	BOX QTY	WT (LB)	WT (G)
G400-4242-18	1" OD (3/4" ID) 3/4" x 3/4" SS Gas Connector (18") FIP x FIP	EA	0.606	275.0



1" Stainless Steel Flexible Gas Connectors 1" OD (3/4" ID) 3/4" MIP X 3/4" FIP

PART #	OD - DESCRIPTION	BOX QTY	WT (LB)	WT (G)
G400-4142-12	1" OD (3/4" ID) 3/4" x 3/4" SS Gas Connector (12") MIP x FIP	10	0.483	219.1
G400-4142-18	1" OD (3/4" ID) 3/4" x 3/4" SS Gas Connector (18") MIP x FIP	10	0.594	269.5
G400-4142-24	1" OD (3/4" ID) 3/4" x 3/4" SS Gas Connector (24") MIP x FIP	10	0.705	320.0
G400-4142-30	1" OD (3/4" ID) 3/4" x 3/4" SS Gas Connector (30") MIP x FIP	10	0.818	370.9
G400-4142-36	1" OD (3/4" ID) 3/4" x 3/4" SS Gas Connector (36") MIP x FIP	10	0.928	420.8
G400-4142-48	1" OD (3/4" ID) 3/4" x 3/4" SS Gas Connector (48") MIP x FIP	10	1.150	521.7
G400-4142-60	1" OD (3/4" ID) 3/4" x 3/4" SS Gas Connector (60") MIP x FIP	10	1.373	622.6
G400-4142-72	1" OD (3/4" ID) 3/4" x 3/4" SS Gas Connector (72") MIP x FIP	10	1.595	723.5



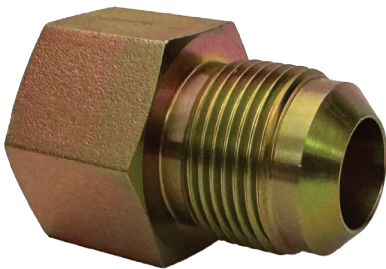
Coated Stainless Steel Flexible Gas Connectors 1" OD (3/4" ID) 3/4" MIP X 3/4" FIP

PART #	OD - DESCRIPTION	BOX QTY	WT (LB)	WT (G)
G403-4142-12	1" OD (3/4" ID) 3/4" x 3/4" SS Coated (12") MIP x FIP	10	1.270	576.2
G403-4142-18	1" OD (3/4" ID) 3/4" x 3/4" SS Coated (18") MIP x FIP	10	1.388	629.6
G403-4142-24	1" OD (3/4" ID) 3/4" x 3/4" SS Coated (24") MIP x FIP	10	1.506	683.1
G403-4142-30	1" OD (3/4" ID) 3/4" x 3/4" SS Coated (30") MIP x FIP	10	1.624	736.6
G403-4142-36	1" OD (3/4" ID) 3/4" x 3/4" SS Coated (36") MIP x FIP	10	1.742	790.1



Coated Stainless Steel Flexible Gas Connectors 1" OD (3/4" ID) 3/4" MIP X 3/4" FIP - Continued

PART #	OD - DESCRIPTION	BOX QTY	WT (LB)	WT (G)
G403-4142-48	1" OD (3/4" ID) 3/4" x 3/4" SS Coated (48") MIP x FIP	10	1.978	897.1
G403-4142-60	SS Coated Gas Connector 60" x 1" OD (3/4" ID) 3/4" MIP x 3/4" FIP	10	2.214	1004.1
G403-4142-72	SS Coated Gas Connector 72" x 1" OD (3/4" ID) 3/4" MIP x 3/4" FIP	10	2.449	1111.0



Brass Flare Fittings (Flare x FPT)

PART #	OD - DESCRIPTION	BOX QTY	WT (LB)	WT (G)
GU1-6D-F	3/8" OD x 1/2" Gas Connector Adapter	10	0.115	52.0
GU1-8D-F	1/2" OD x 1/2" Gas Connector Adapter	10	0.134	61.0
GU1-10D-F	15/16-16 x 1/2" Gas Connector Adapter	EA	0.154	70.0
GU1-10E-F	15/16-16 x 3/4" Gas Connector Adapter	10	0.201	91.0



Brass Flare Fittings (Flare x MPT)

PART #	OD - DESCRIPTION	BOX QTY	WT (LB)	WT (G)
GU1-6C-S	3/8" OD x 3/8" Gas Connector Adapter	EA	0.099	45.0
GU1-6D-S	3/8" OD x 1/2" Gas Connector Adapter	EA	0.132	60.0
GU1-10D-S	15/16-16 x 1/2" Gas Connector Adapter	EA	0.183	83.0
GU1-10E-S	15/16-16 x 3/4" Gas Connector Adapter	EA	0.262	119.0



Gas Shut Off Valve (FIP x FIP)

PART #	OD - DESCRIPTION	BOX QTY	WT (LB)	WT (G)
G01-2806	3/8" x 3/8" Gas Shut Off Valve (Straight)	EA	0.258	117.0
G01-2808	1/2" x 1/2" Gas Shut Off Valve (Straight)	10	0.331	150.0
G01-2812	3/4" x 3/4" Gas Shut Off Valve (Straight)	10	0.481	218.0
G01-2801	1" Gas Ball Valve	EA	0.761	345.0



One Piece Gas Valve

PART #	OD - DESCRIPTION	BOX QTY	WT (LB)	WT (G)
G01-2809-1PC	1/2" One Piece Valve Body	EA	0.388	176.0
G01-2813-1PC	3/4" One Piece Valve Body	EA	0.598	271.0
G01-2802-1PC	1" One Piece Valve Body	EA	1.003	455.0



FAST ORDER TURNAROUND

Our Operations Center is strategically located in the Memphis, Tennessee metro area to streamline delivery and bolster the customer service that NDL is known for throughout the industry.



We Focus on Quality and Service So You Can Install with Confidence.

Since 1998, it has been our mission to stay ahead of the curve as an industry leader in the HVAC, Refrigeration, and Plumbing markets. We have achieved this over the years by placing a heavy emphasis on quality, innovation, and maintaining a global team of experienced professionals to deliver top-notch service. We continue to hold ourselves to the highest standards, never sacrificing our commitment to our customers or our product that has what made us the company we are today.

What you can expect from us:

- Fast order turnaround
- Real-time order communications
- Field-experienced sales and technical support
- Parts packaged in contractor-friendly sized bags
- High-quality control standards for superior fit and finish



Innovative HVAC-R Products That Exceed Expectations.

We began our journey looking for the best ACR copper fitting and we engineered a design that now exceeds industry standards. We maintain the same high-quality standards and performance expectations with our filter driers, refrigeration ball valves, and other HVAC and refrigeration products.

Learn more about our high-quality products with zero reported failures at ndlinc.com.



Explore our full line of high-quality HVAC-R and plumbing products.

ndlinc.com | 1-866-635-6888 | sales@ndlinc.com

@ndlindustries

