



# Solid Core Bi-Flow Filter Driers (NCHBF)

## TECHNICAL SPECIFICATIONS SUBMITTAL FORM

Job Name:	Submittal Date:	Wholesaler:
Job Location:	Engineer/Architect:	Contractor:

### Product Use:

Filter Driers for use in HVAC and Refrigeration applications.

### Design and Features:

- Body design manufactured with advanced welding technology for leak-free joints and superior performance with high-pressure refrigerants.
- Finished with semi-gloss black epoxy-polyester powder coat paint tested to 1,000 hours of salt spray, exceeding ASTM standards.
- Desiccant comprised of molecular sieve and activated alumina in a ratio of 80:20.
- Strong and rust-free furnace-brazed threaded fittings.
- Recommended for Commercial Air Conditioning, Commercial Refrigeration, Cold Chains, Precision Air Conditioners, Industrial Refrigeration, Food Retail.
- Furnace brazed pure copper ends, boasting both longer length and thicker walls when juxtaposed with other brands' offerings.
- Uses honey-comb design perforated plate to minimize pressure drops.
- Solid core type with XH-11 grade molecular sieves.
- One-year warranty.

### Certifications and Approvals:

- CE
- UL-Listed

### Selection:

- Solid Core Bi-Flow Filter Driers
- Solid Core Bi-Flow Filter Driers with TW
- Press Compatible Solid Core Bi-Flow Filter Driers
- Press Compatible Solid Core Bi-Flow Filter Driers with TW





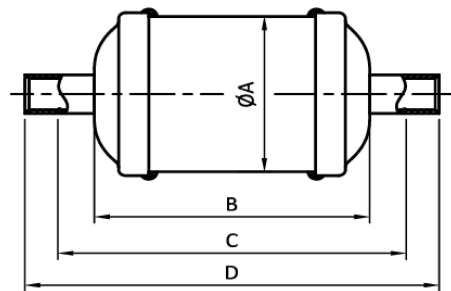
# Solid Core Bi-Flow Filter Driers

## NCHBF-S Dimensions

PART #	OUTER DIA. ØA		BODY LENGTH B		STOPPER TO STOPPER LENGTH C		OVERALL LENGTH D		CONNECTION TYPE (IN)	WT (LB)	WT (G)
	MM	IN	MM	IN	MM	IN	MM	IN			
NCHBF-052S	Ø 63.5	Ø 2.5"	76	2.99"	106	4.17"	126	4.96"	1/4" ODF	1.435	651
NCHBF-053S					102.3	4.03"			3/8" ODF	0.972	441
NCHBF-082S			97	3.82"	127	5"	147	5.79"	1/4" ODF	1.213	550
NCHBF-083S					123.3	4.85"			3/8" ODF	1.202	545
NCHBF-084S					1/2" ODF	1.257			570		
NCHBF-163S	Ø 76.2	Ø 3"	117	4.61"	143.3	5.64"	167	6.57"	3/8" ODF	1.918	870
NCHBF-164S									1/2" ODF	2.088	947
NCHBF-165S									5/8" ODF	1.982	899
NCHBF-303S			191	7.52"	217.3	8.56"	241	9.49"	3/8" ODF	3.505	1590
NCHBF-304S									1/2" ODF	3.505	1590
NCHBF-305S	5/8" ODF	3.505							1590		
NCHBF-306S	3/4" ODF	3.505							1590		

## NCHBF-S Dimensions

NCHBF-052S	1/4" Bi-Flow Filter Drier
NCHBF-053S	3/8" Bi-Flow Filter Drier
NCHBF-082S	1/4" Bi-Flow Filter Drier
NCHBF-083S	3/8" Bi-Flow Filter Drier
NCHBF-084S	1/2" Bi-Flow Filter Drier
NCHBF-163S	3/8" Bi-Flow Filter Drier
NCHBF-164S	1/2" Bi-Flow Filter Drier
NCHBF-165S	5/8" Bi-Flow Filter Drier
NCHBF-303S	3/8" Bi-Flow Filter Drier
NCHBF-304S	1/2" Bi-Flow Filter Drier
NCHBF-305S	5/8" Bi-Flow Filter Drier
NCHBF-306S	3/4" Bi-Flow Filter Drier



The information contained herein is not intended to replace the full product installation and safety information available or the experience of a trained product installer. You are required to thoroughly read all installation instructions and product safety information before beginning the installation of a product.

All installations must completely comply with all NDL Industries warnings and instructions, national state and local codes and all applicable ANSI standards.

NDL Industries product specifications in U.S. customary units and metric are approximate and are provided for reference only. For precise measurements, please contact Customer.

Service. NDL Industries reserves the right to change or modify product design, construction, specifications, or materials without prior notice and without incurring any obligation to make such changes and modifications on NDL products previously or subsequently sold.



Explore our full line of high-quality HVAC-R and plumbing products.

ndlinc.com | 1-866-635-6888 | sales@ndlinc.com

@ndlindustries





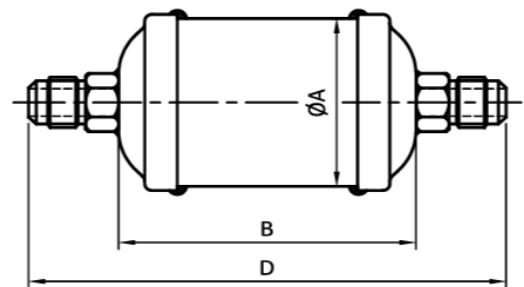
# Solid Core Bi-Flow Filter Driers

## NCHBF-F Dimensions

PART #	OUTER DIA. ØA		BODY LENGTH B		OVERALL LENGTH D		CONNECTION TYPE (IN)	WT (LB)	WT (G)
	MM	IN	MM	IN	MM	IN			
NCHBF-052F	Ø 63.5	Ø 2.5"	76	2.99"	122	4.8"	1/4" SAE	1.435	651
NCHBF-053F					130	5.12"	3/8" SAE	1.435	651
NCHBF-082F			97	3.82"	143	5.63"	1/4" SAE	1.257	570
NCHBF-083F					151	5.94"	3/8" SAE	1.279	580
NCHBF-084F					157	6.18"	1/2" SAE	1.841	835
NCHBF-163F	Ø 76.2	Ø 3"	117	4.61"	171	6.73"	3/8" SAE	1.962	890
NCHBF-164F					177	6.97"	1/2" SAE	2.315	1050
NCHBF-165F					185	7.28"	5/8" SAE	2.088	947
NCHBF-303F			191	7.52"	246	9.65"	3/8" SAE	3.505	1590
NCHBF-304F					251	9.88"	1/2" SAE	3.505	1590
NCHBF-305F					259	10.2"	5/8" SAE	3.505	1590
NCHBF-306F					265	10.43"	3/4" SAE	3.505	1590

## NCHBF-F Dimensions

NCHBF-052F	1/4" Bi-Flow Filter Drier
NCHBF-053F	3/8" Bi-Flow Filter Drier
NCHBF-082F	1/4" Bi-Flow Filter Drier
NCHBF-083F	3/8" Bi-Flow Filter Drier
NCHBF-084F	1/2" Bi-Flow Filter Drier
NCHBF-163F	3/8" Bi-Flow Filter Drier
NCHBF-164F	1/2" Bi-Flow Filter Drier
NCHBF-165F	5/8" Bi-Flow Filter Drier
NCHBF-303F	3/8" Bi-Flow Filter Drier
NCHBF-304F	1/2" Bi-Flow Filter Drier
NCHBF-305F	5/8" Bi-Flow Filter Drier
NCHBF-306F	3/4" Bi-Flow Filter Drier



The information contained herein is not intended to replace the full product installation and safety information available or the experience of a trained product installer. You are required to thoroughly read all installation instructions and product safety information before beginning the installation of a product.

All installations must completely comply with all NDL Industries warnings and instructions, national state and local codes and all applicable ANSI standards.

NDL Industries product specifications in U.S. customary units and metric are approximate and are provided for reference only. For precise measurements, please contact Customer.

Service. NDL Industries reserves the right to change or modify product design, construction, specifications, or materials without prior notice and without incurring any obligation to make such changes and modifications on NDL products previously or subsequently sold.



Explore our full line of high-quality HVAC-R and plumbing products.

ndlinc.com | 1-866-635-6888 | sales@ndlinc.com

@ndlindustries

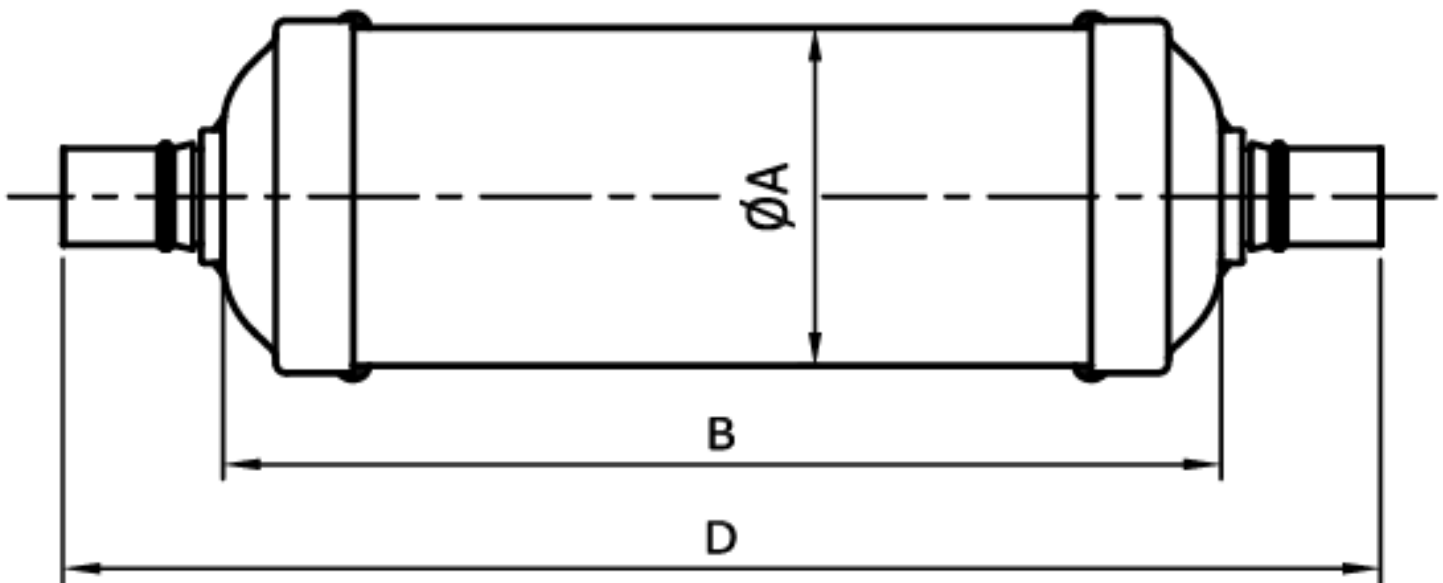




# Solid Core Bi-Flow Filter Driers

## NCHBF-S Dimensions

PART #	OUTER DIA. ØA		BODY LENGTH B		STOPPER TO STOPPER LENGTH C		OVERALL LENGTH D		CONNECTION TYPE (IN)	WT (LB)	WT (G)
	MM	IN	MM	IN	MM	IN	MM	IN			
NCHBF-307S	Ø 76.2	Ø 3"	191	7.52"	221	8.7"	265	10.43"	7/8" ODF	3.505	1590
NCHBF-309S							275	10.83"			



## NCHBF-S Dimensions

	NCHBF-307S	7/8" Bi-Flow Filter Drier
	NCHBF-309S	1-1/8" Bi-Flow Filter Drier

The information contained herein is not intended to replace the full product installation and safety information available or the experience of a trained product installer. You are required to thoroughly read all installation instructions and product safety information before beginning the installation of a product.

All installations must completely comply with all NDL Industries warnings and instructions, national state and local codes and all applicable ANSI standards.

NDL Industries product specifications in U.S. customary units and metric are approximate and are provided for reference only. For precise measurements, please contact Customer

Service. NDL Industries reserves the right to change or modify product design, construction, specifications, or materials without prior notice and without incurring any obligation to make such changes and modifications on NDL products previously or subsequently sold.



Explore our full line of high-quality HVAC-R and plumbing products.

ndlinc.com | 1-866-635-6888 | sales@ndlinc.com

@ndlindustries

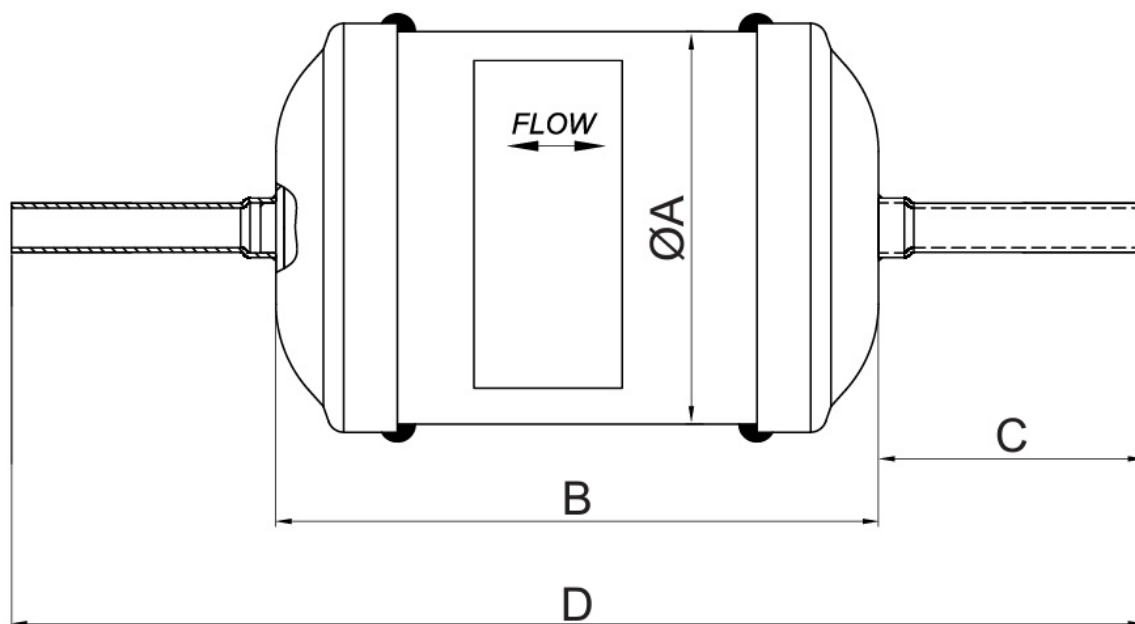




# Press Compatible Solid Core Bi-Flow Filter Driers

## NCHBF-Z Dimensions

PART #	OUTER DIA. ØA		BODY LENGTH B		STOPPER TO STOPPER LENGTH C		OVERALL LENGTH D		CONNECTION TYPE (IN)	WT (LB)	WT (G)
	MM	IN	MM	IN	MM	IN	MM	IN			
NCHBF-083-Z	Ø 63.5	Ø 2.50"	97	3.81"	51.5	2.02"	200	7.87"	3/8" ODM	1.235	560.2
NCHBF-163-Z			117	4.60"			220	8.66"			



## NCHBF-Z Dimensions

	NCHBF-083-Z	3/8" Bi-Flow Filter Drier (Press Compatible)
	NCHBF-163-Z	3/8" Bi-Flow Filter Drier (Press Compatible)

The information contained herein is not intended to replace the full product installation and safety information available or the experience of a trained product installer. You are required to thoroughly read all installation instructions and product safety information before beginning the installation of a product.

All installations must completely comply with all NDL Industries warnings and instructions, national state and local codes and all applicable ANSI standards.

NDL Industries product specifications in U.S. customary units and metric are approximate and are provided for reference only. For precise measurements, please contact Customer

Service. NDL Industries reserves the right to change or modify product design, construction, specifications, or materials without prior notice and without incurring any obligation to make such changes and modifications on NDL products previously or subsequently sold.



Explore our full line of high-quality HVAC-R and plumbing products.

ndlinc.com | 1-866-635-6888 | sales@ndlinc.com

@ndlindustries





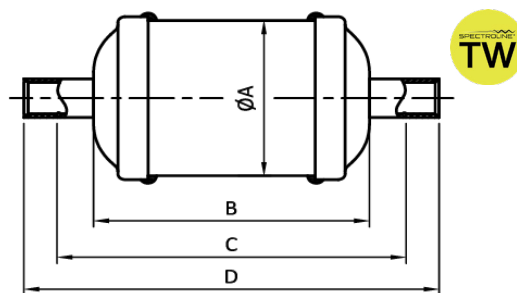
# Solid Core Bi-Flow Filter Driers with TW

## NCHBF-S-TW Dimensions

PART #	OUTER DIA. ØA		BODY LENGTH B		STOPPER TO STOPPER LENGTH C		OVERALL LENGTH D		CONNECTION TYPE (IN)	WT (LB)	WT (G)
	MM	IN	MM	IN	MM	IN	MM	IN			
NCHBF-052S-TW	Ø 63.5	Ø 2.5"	76	2.99"	106	4.17"	126	4.96"	1/4" ODF	1.436	651.4
NCHBF-083S-TW			97	3.82"	123.3	4.85"	147	5.79"	3/8" ODF	1.202	545.0
NCHBF-084S-TW										1/2" ODF	1.842
NCHBF-163S-TW	Ø 76.2	Ø 3"	117	4.61"	143.3	5.64"	167	6.57"	3/8" ODF	1.918	870.0
NCHBF-164S-TW									1/2" ODF	2.083	945.0
NCHBF-165S-TW									5/8" ODF	2.151	975.8
NCHBF-303S-TW			3/8" ODF	3.525	1599.0						
NCHBF-304S-TW			1/2" ODF	3.563	1616.0						
NCHBF-305S-TW	5/8" ODF	3.507	1590.8								

## NCHBF-S-TW Dimensions

NCHBF-052S-TW	1/4" Bi-Flow Filter Drier with Tracer Wafer
NCHBF-083S-TW	3/8" Bi-Flow Filter Drier with Tracer Wafer
NCHBF-084S-TW	1/2" Bi-Flow Filter Drier with Tracer Wafer
NCHBF-163S-TW	3/8" Bi-Flow Filter Drier with Tracer Wafer
NCHBF-164S-TW	1/2" Bi-Flow Filter Drier with Tracer Wafer
NCHBF-165S-TW	5/8" Bi-Flow Filter Drier with Tracer Wafer
NCHBF-303S-TW	3/8" Bi-Flow Filter Drier with Tracer Wafer
NCHBF-304S-TW	1/2" Bi-Flow Filter Drier with Tracer Wafer
NCHBF-305S-TW	5/8" Bi-Flow Filter Drier with Tracer Wafer



The information contained herein is not intended to replace the full product installation and safety information available or the experience of a trained product installer. You are required to thoroughly read all installation instructions and product safety information before beginning the installation of a product.

All installations must completely comply with all NDL Industries warnings and instructions, national state and local codes and all applicable ANSI standards.

NDL Industries product specifications in U.S. customary units and metric are approximate and are provided for reference only. For precise measurements, please contact Customer.

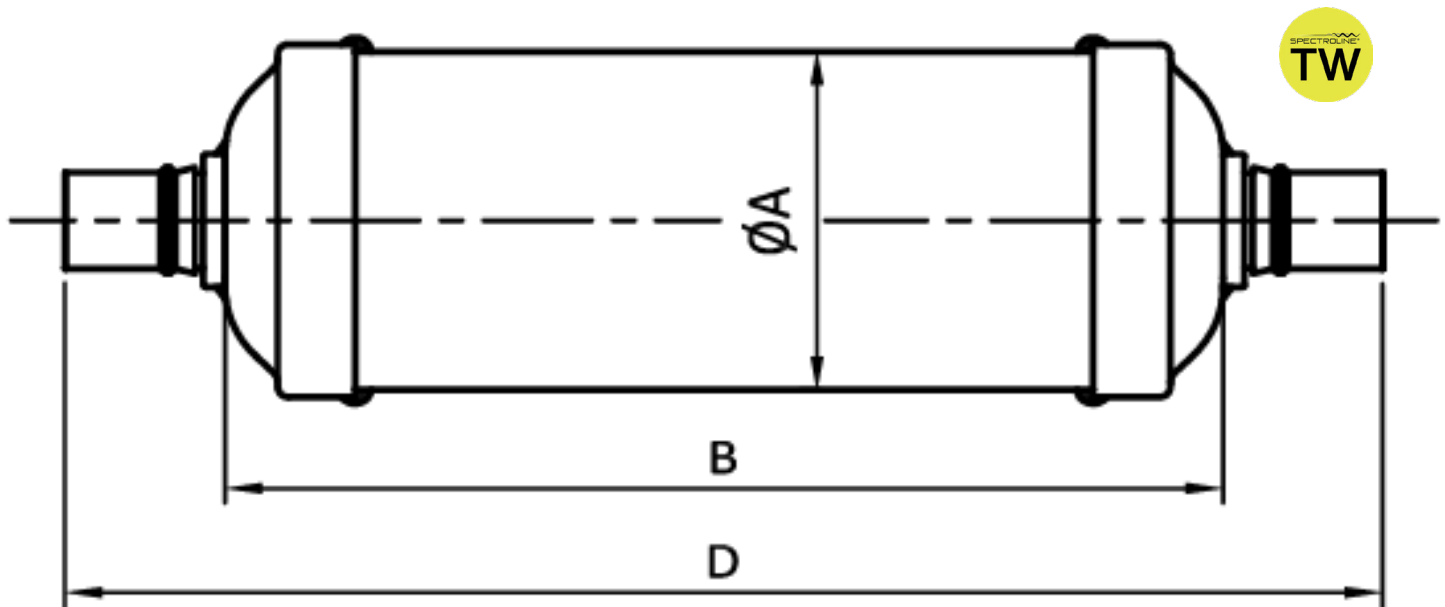
Service. NDL Industries reserves the right to change or modify product design, construction, specifications, or materials without prior notice and without incurring any obligation to make such changes and modifications on NDL products previously or subsequently sold.



# Solid Core Bi-Flow Filter Driers with TW

## NCHBF-S-TW Dimensions

PART #	OUTER DIA. ØA		BODY LENGTH B		STOPPER TO STOPPER LENGTH C		OVERALL LENGTH D		CONNECTION TYPE (IN)	WT (LB)	WT (G)
	MM	IN	MM	IN	MM	IN	MM	IN			
NCHBF-307S-TW	Ø 76.2	Ø 3"	191	7.52"	221	8.7"	265	10.43"	7/8" ODF	3.713	1684.0



## NCHBF-S-TW Dimensions

	NCHBF-307S-TW	7/8" Bi-Flow Filter Drier with Tracer Wafer
--	---------------	---

The information contained herein is not intended to replace the full product installation and safety information available or the experience of a trained product installer. You are required to thoroughly read all installation instructions and product safety information before beginning the installation of a product.

All installations must completely comply with all NDL Industries warnings and instructions, national state and local codes and all applicable ANSI standards.

NDL Industries product specifications in U.S. customary units and metric are approximate and are provided for reference only. For precise measurements, please contact Customer

Service. NDL Industries reserves the right to change or modify product design, construction, specifications, or materials without prior notice and without incurring any obligation to make such changes and modifications on NDL products previously or subsequently sold.



Explore our full line of high-quality HVAC-R and plumbing products.

ndlinc.com | 1-866-635-6888 | sales@ndlinc.com

@ndlindustries

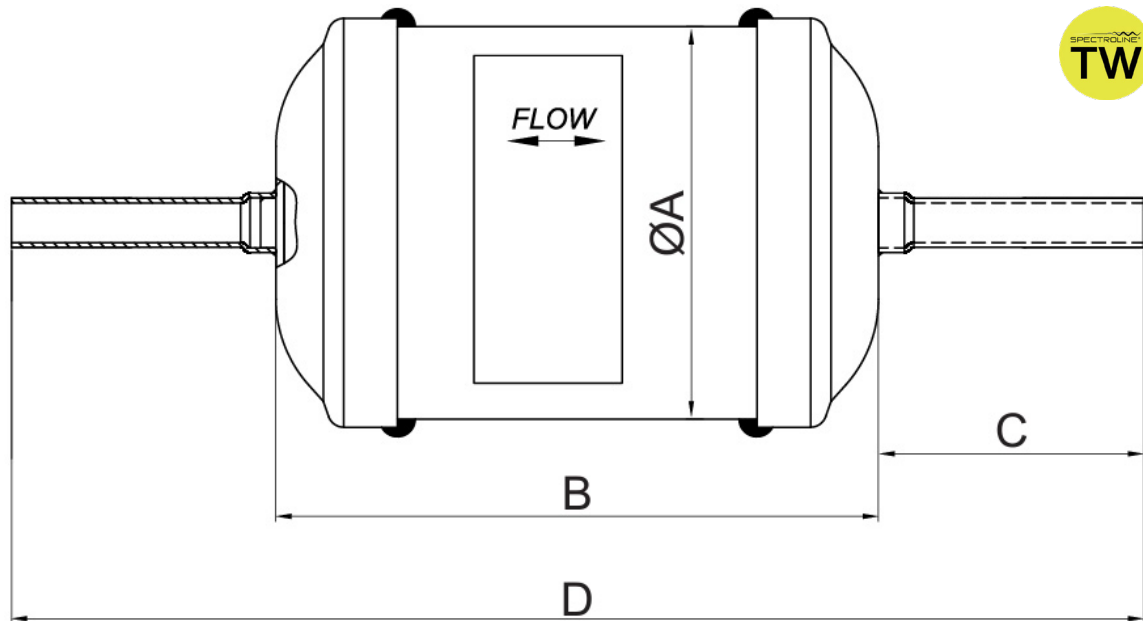




# Press Compatible Solid Core Bi-Flow Filter Driers with TW

## NCHBF-Z-TW Dimensions

PART #	OUTER DIA. ØA		BODY LENGTH B		STOPPER TO STOPPER LENGTH C		OVERALL LENGTH D		CONNECTION TYPE (IN)	WT (LB)	WT (G)
	MM	IN	MM	IN	MM	IN	MM	IN			
NCHBF-083-Z	Ø 63.5	Ø 2.50"	97	3.81"	51.5	2.02	200	7.87"	3/8" ODM	1.246	565.2
NCHBF-163-Z			117	4.60"			220	8.66"			



## NCHBF-Z-TW Dimensions

	NCHBF-083-Z-TW	3/8" Bi-Flow Filter Drier with Tracer Wafer (Press Compatible)
	NCHBF-163-Z-TW	3/8" Bi-Flow Filter Drier with Tracer Wafer (Press Compatible)

The information contained herein is not intended to replace the full product installation and safety information available or the experience of a trained product installer. You are required to thoroughly read all installation instructions and product safety information before beginning the installation of a product.

All installations must completely comply with all NDL Industries warnings and instructions, national state and local codes and all applicable ANSI standards.

NDL Industries product specifications in U.S. customary units and metric are approximate and are provided for reference only. For precise measurements, please contact Customer

Service. NDL Industries reserves the right to change or modify product design, construction, specifications, or materials without prior notice and without incurring any obligation to make such changes and modifications on NDL products previously or subsequently sold.



Explore our full line of high-quality HVAC-R and plumbing products.

ndlinc.com | 1-866-635-6888 | sales@ndlinc.com

@ndlindustries

