



# Solid Core Liquid Line Filter Driers (NCH)

## TECHNICAL SPECIFICATIONS SUBMITTAL FORM

Job Name:	Submittal Date:	Wholesaler:
Job Location:	Engineer/Architect:	Contractor:

### Product Use:

Filter Driers for use in HVAC and Refrigeration applications.

### Design and Features:

- Body design manufactured with advanced welding technology for leak-free joints and superior performance with high-pressure refrigerants.
- Finished with semi-gloss black epoxy-polyester powder coat paint tested to 1,000 hours of salt spray, exceeding ASTM standards.
- Desiccant comprised of molecular sieve and activated alumina in a ratio of 70:30.
- Strong and rust-free furnace-brazed threaded fittings.
- Recommended for Commercial Air Conditioning, Commercial Refrigeration, Cold Chains, Precision Air Conditioners, Industrial Refrigeration, Food Retail.
- Furnace brazed pure copper ends, boasting both longer length and thicker walls when juxtaposed with other brands' offerings.
- Uses honey-comb design perforated plate to minimize pressure drops.
- Solid core type with XH-11 grade molecular sieves.
- One-year warranty

### Certifications and Approvals:

- CE
- UL-Listed
- CRN-Approved

### Selection:

- Solid Core Liquid Line Filter Driers
- Solid Core Liquid Line Filter Driers with Tracer Wafer
- Press Compatible Solid Core Liquid Line Filter Driers
- Press Compatible Solid Core Liquid Line Filter Driers with Tracer Wafer





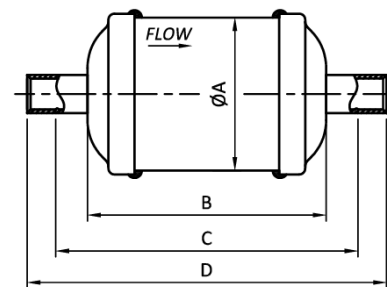
# Solid Core Liquid Line Filter Driers

## NCH-S Dimensions

PART #	OUTER DIA. ØA		BODY LENGTH B		STOPPER TO STOPPER LENGTH C		OVERALL LENGTH D		CONNECTION TYPE (IN)	WT (LB)	WT (G)
	MM	IN	MM	IN	MM	IN	MM	IN			
NCH-052S	Ø 63.5	Ø 2.5"	78	3.07"	108	4.25"	128	5.04"	1/4" ODF	1.058	480
NCH-053S									3/8" ODF	0.926	420
NCH-082S			99	3.9"	129	5.08"	149	5.87"	1/4" ODF	1.191	540
NCH-083S									3/8" ODF	1.345	610
NCH-084S									1/2" ODF	1.235	560
NCH-163S			122	4.8"	152	5.98"	172	6.77"	3/8" ODF	1.627	738
NCH-164S									1/2" ODF	1.609	730
NCH-165S									5/8" ODF	1.682	763

## NCH-S Dimensions

NCH-052S	1/4" Liquid Line Filter Drier
NCH-053S	3/8" Liquid Line Filter Drier
NCH-082S	1/4" Liquid Line Filter Drier
NCH-083S	3/8" Liquid Line Filter Drier
NCH-084S	1/2" Liquid Line Filter Drier
NCH-163S	3/8" Liquid Line Filter Drier
NCH-164S	1/2" Liquid Line Filter Drier
NCH-165S	5/8" Liquid Line Filter Drier



The information contained herein is not intended to replace the full product installation and safety information available or the experience of a trained product installer. You are required to thoroughly read all installation instructions and product safety information before beginning the installation of a product.

All installations must completely comply with all NDL Industries warnings and instructions, national state and local codes and all applicable ANSI standards.

NDL Industries product specifications in U.S. customary units and metric are approximate and are provided for reference only. For precise measurements, please contact Customer.

Service. NDL Industries reserves the right to change or modify product design, construction, specifications, or materials without prior notice and without incurring any obligation to make such changes and modifications on NDL products previously or subsequently sold.



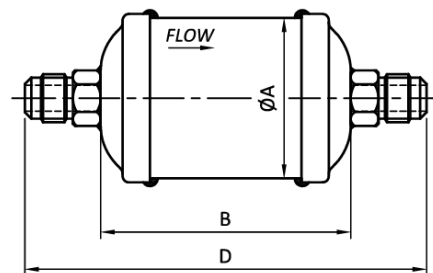
# Solid Core Liquid Line Filter Driers

## NCH-F Dimensions

PART #	OUTER DIA. ØA		BODY LENGTH B		OVERALL LENGTH D		CONNECTION TYPE (IN)	WT (LB)	WT (G)
	MM	IN	MM	IN	MM	IN			
NCH-052F	Ø 63.5	Ø 2.5"	78	3.07"	124	4.88"	1/4" SAE	1.014	460
NCH-053F					132	5.2"	3/8" SAE	1.168	530
NCH-082F			99	3.9"	145	5.71"	1/4" SAE	1.257	570
NCH-083F					153	6.02"	3/8" SAE	1.455	660
NCH-084F					159	6.26"	1/2" SAE	1.477	670
NCH-163F					122	4.8"	176	6.93"	3/8" SAE
NCH-164F			190	7.17"			1/2" SAE	1.631	740
NCH-165F			148	7.48"			5/8" SAE	1.676	760
NCH-303F	Ø 76.2	Ø 3"	190	7.48"	244	9.61"	3/8" SAE	3.483	1580
NCH-304F					244	9.61"	1/2" SAE	3.417	1550
NCH-305F					258	10.16"	5/8" SAE	3.417	1550
NCH-306F					264	10.39"	3/4" SAE	3.792	1720
NCH-414F	Ø 88.9	Ø 3.5"	198	7.8"	258	10.16"	1/2" SAE	4.674	2120
NCH-415F					266	10.47"	5/8" SAE	4.52	2050

## NCH-F Dimensions

NCH-052F	1/4" Liquid Line Filter Drier
NCH-053F	3/8" Liquid Line Filter Drier
NCH-082F	1/4" Liquid Line Filter Drier
NCH-083F	3/8" Liquid Line Filter Drier
NCH-084F	1/2" Liquid Line Filter Drier
NCH-163F	3/8" Liquid Line Filter Drier
NCH-164F	1/2" Liquid Line Filter Drier
NCH-165F	5/8" Liquid Line Filter Drier
NCH-303F	3/8" Liquid Line Filter Drier
NCH-304F	1/2" Liquid Line Filter Drier
NCH-305F	5/8" Liquid Line Filter Drier
NCH-306F	3/4" Liquid Line Filter Drier
NCH-414F	1/2" Liquid Line Filter Drier
NCH-415F	5/8" Liquid Line Filter Drier



The information contained herein is not intended to replace the full product installation and safety information available or the experience of a trained product installer. You are required to thoroughly read all installation instructions and product safety information before beginning the installation of a product.

All installations must completely comply with all NDL Industries warnings and instructions, national state and local codes and all applicable ANSI standards.

NDL Industries product specifications in U.S. customary units and metric are approximate and are provided for reference only. For precise measurements, please contact Customer.

Service. NDL Industries reserves the right to change or modify product design, construction, specifications, or materials without prior notice and without incurring any obligation to make such changes and modifications on NDL products previously or subsequently sold.



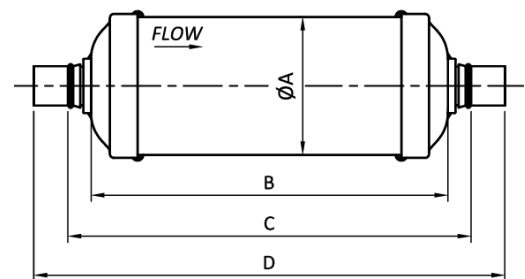
# Solid Core Liquid Line Filter Driers

## NCH-S Dimensions

PART #	OUTER DIA. ØA		BODY LENGTH B		STOPPER TO STOPPER LENGTH C		OVERALL LENGTH D		CONNECTION TYPE (IN)	WT (LB)	WT (G)
	MM	IN	MM	IN	MM	IN	MM	IN			
NCH-307S	Ø 76.2	Ø 3"	190	7.48"	220	8.66"	264	10.39"	7/8" ODF	3.483	1580
NCH-309S					220	8.66"	274	10.79"	1-1/8" ODF	3.726	1690
NCH-417S	Ø 88.9	Ø 3.5"	198	7.8"	228	8.98"	272	10.71"	7/8" ODF	4.872	2210
NCH-419S					228	8.98"	282	11.1"	1-1/8" ODF	4.85	2200

## NCH-S Dimensions

NCH-307S	7/8" Liquid Line Filter Drier
NCH-309S	1-1/8" Liquid Line Filter Drier
NCH-417S	7/8" Liquid Line Filter Drier
NCH-419S	1-1/8" Liquid Line Filter Drier



The information contained herein is not intended to replace the full product installation and safety information available or the experience of a trained product installer. You are required to thoroughly read all installation instructions and product safety information before beginning the installation of a product.

All installations must completely comply with all NDL Industries warnings and instructions, national state and local codes and all applicable ANSI standards.

NDL Industries product specifications in U.S. customary units and metric are approximate and are provided for reference only. For precise measurements, please contact Customer.

Service. NDL Industries reserves the right to change or modify product design, construction, specifications, or materials without prior notice and without incurring any obligation to make such changes and modifications on NDL products previously or subsequently sold.



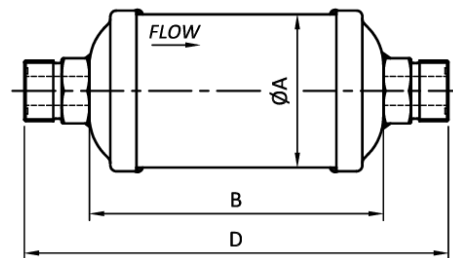
# Solid Core Liquid Line Filter Driers

## NCH-R Dimensions

PART #	OUTER DIA. ØA		BODY LENGTH B		OVERALL LENGTH D		CONNECTION TYPE (IN)	WT (LB)	WT (G)
	MM	IN	MM	IN	MM	IN			
	NCH-163R					162			
NCH-164R	Ø 63.5	Ø 2.5"	122	4.8"	176	6.38"	13/16-16 ORFS	1.616	733
NCH-165R					148	6.93"	1"-14 ORFS	1.616	733
NCH-303R					228	8.98"	11/16-16 ORFS	3.373	1530
NCH-305R	Ø 76.2	Ø 3"	190	7.48"	244	9.61"	1"-14 ORFS	3.748	1700

## NCH-R Dimensions

	NCH-163R	11/16-16" Liquid Line Filter Drier
	NCH-164R	13/16-16" Liquid Line Filter Drier
	NCH-165R	1-1/4" Liquid Line Filter Drier
	NCH-303R	11/16-16" Liquid Line Filter Drier
	NCH-305R	1-1/4" Liquid Line Filter Drier



*The information contained herein is not intended to replace the full product installation and safety information available or the experience of a trained product installer. You are required to thoroughly read all installation instructions and product safety information before beginning the installation of a product.*

*All installations must completely comply with all NDL Industries warnings and instructions, national state and local codes and all applicable ANSI standards.*

*NDL Industries product specifications in U.S. customary units and metric are approximate and are provided for reference only. For precise measurements, please contact Customer*

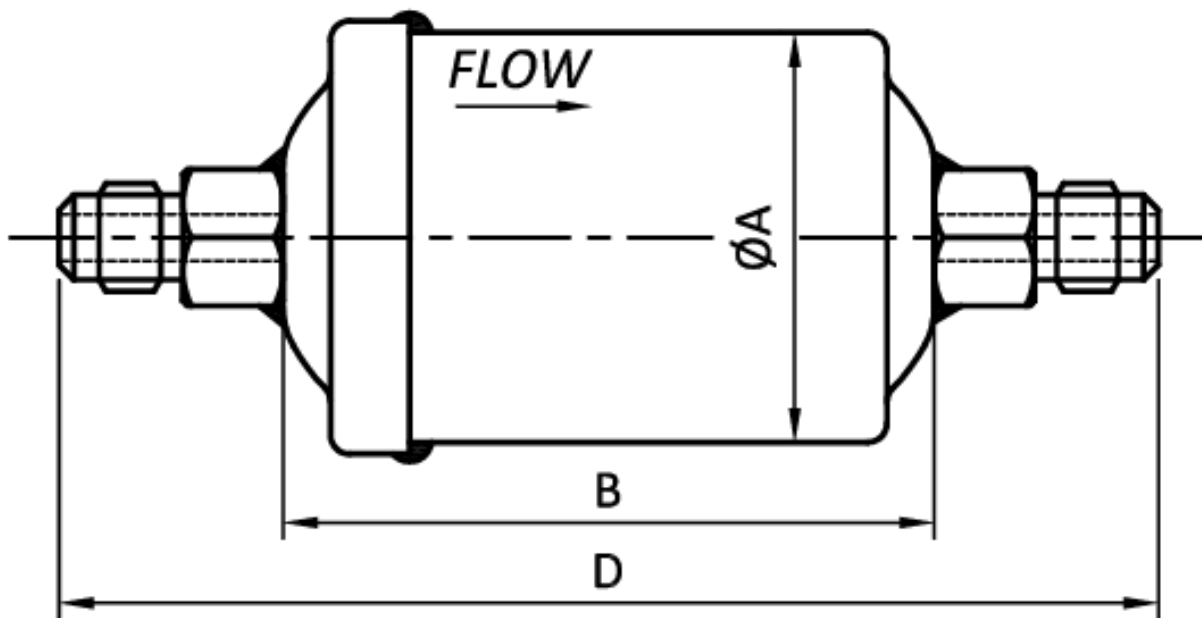
*Service. NDL Industries reserves the right to change or modify product design, construction, specifications, or materials without prior notice and without incurring any obligation to make such changes and modifications on NDL products previously or subsequently sold.*



# Solid Core Liquid Line Filter Driers

## NCH-F Dimensions

PART #	OUTER DIA. $\varnothing A$		BODY LENGTH B		OVERALL LENGTH D		CONNECTION TYPE (IN)	WT (LB)	WT (G)
	MM	IN	MM	IN	MM	IN			
NCH-032F	$\varnothing 42$	$\varnothing 1.6''$	67	2.64''	113	4.45''	1/4" SAE	0.309	140
NCH-033F					121	4.76''	3/8" SAE	0.419	190



## NCH-F Dimensions

	NCH-032F	1/4" Liquid Line Filter Drier
	NCH-033F	3/8" Liquid Line Filter Drier

The information contained herein is not intended to replace the full product installation and safety information available or the experience of a trained product installer. You are required to thoroughly read all installation instructions and product safety information before beginning the installation of a product.

All installations must completely comply with all NDL Industries warnings and instructions, national state and local codes and all applicable ANSI standards.

NDL Industries product specifications in U.S. customary units and metric are approximate and are provided for reference only. For precise measurements, please contact Customer

Service. NDL Industries reserves the right to change or modify product design, construction, specifications, or materials without prior notice and without incurring any obligation to make such changes and modifications on NDL products previously or subsequently sold.



Explore our full line of high-quality HVAC-R and plumbing products.

ndlinc.com | 1-866-635-6888 | sales@ndlinc.com

@ndlindustries

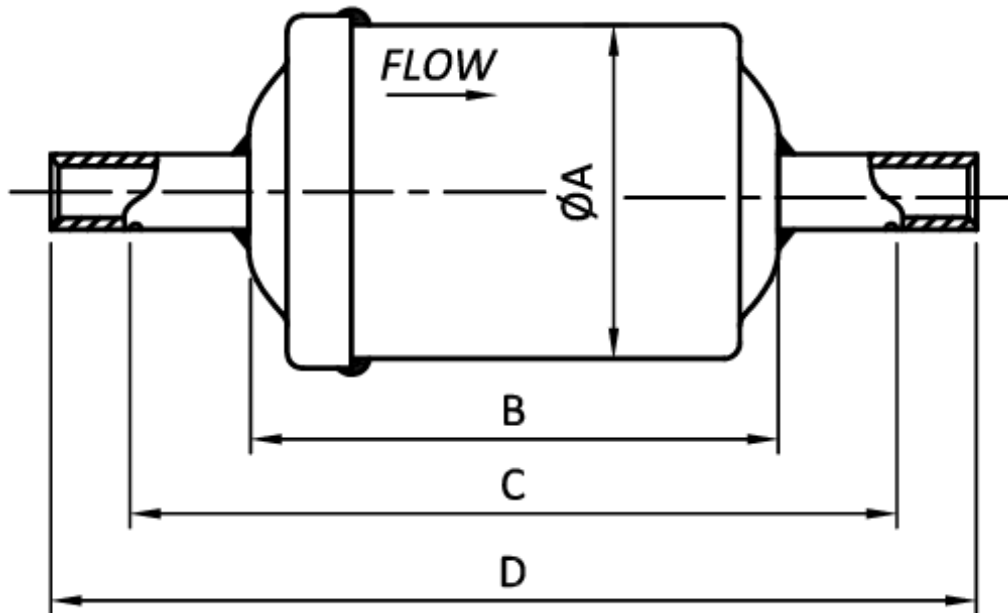




# Solid Core Liquid Line Filter Driers

## NCH-S Dimensions

PART #	OUTER DIA. ØA		BODY LENGTH B		STOPPER TO STOPPER LENGTH C		OVERALL LENGTH D		CONNECTION TYPE (IN)	WT (LB)	WT (G)
	MM	IN	MM	IN	MM	IN	MM	IN			
NCH-032S	Ø 42	Ø 1.6"	67	2.64"	97	3.82"	117	4.61"	1/4" ODF	0.243	110
NCH-033S									3/8" ODF	0.463	210



## NCH-S Dimensions

	NCH-032S	1/4" Liquid Line Filter Drier
	NCH-033S	3/8" Liquid Line Filter Drier

The information contained herein is not intended to replace the full product installation and safety information available or the experience of a trained product installer. You are required to thoroughly read all installation instructions and product safety information before beginning the installation of a product.

All installations must completely comply with all NDL Industries warnings and instructions, national state and local codes and all applicable ANSI standards.

NDL Industries product specifications in U.S. customary units and metric are approximate and are provided for reference only. For precise measurements, please contact Customer

Service. NDL Industries reserves the right to change or modify product design, construction, specifications, or materials without prior notice and without incurring any obligation to make such changes and modifications on NDL products previously or subsequently sold.



Explore our full line of high-quality HVAC-R and plumbing products.

ndlinc.com | 1-866-635-6888 | sales@ndlinc.com

@ndlindustries

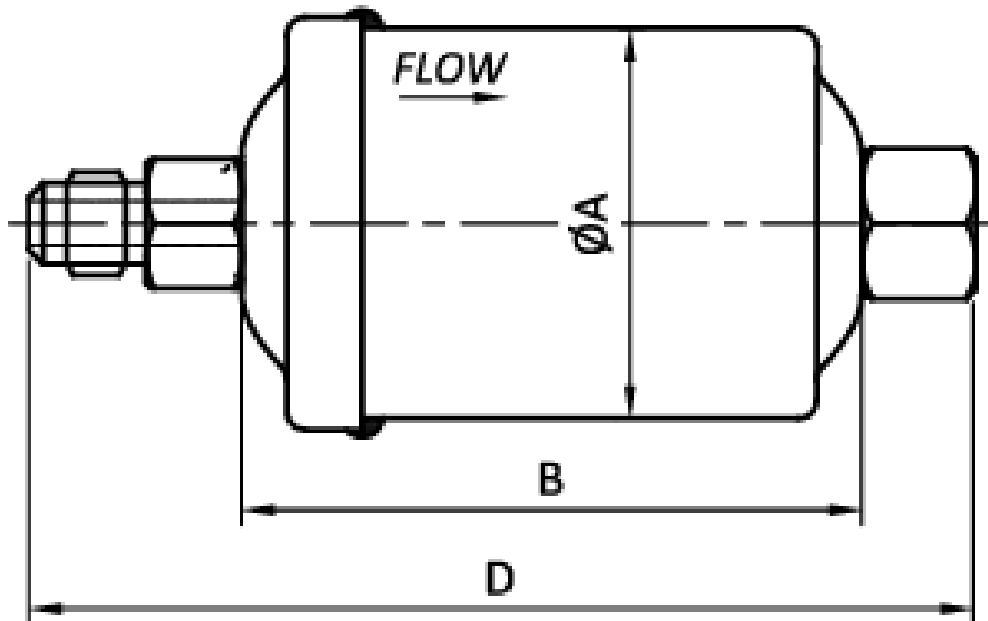




# Solid Core Liquid Line Filter Driers

## NCH-M\*F Dimensions

PART #	OUTER DIA. $\varnothing A$		BODY LENGTH $B$		OVERALL LENGTH $D$		CONNECTION TYPE (IN)	WT (LB)	WT (G)
	MM	IN	MM	IN	MM	IN			
NCH-032F-M*F	$\varnothing 42$	$\varnothing 1.6''$	67	2.64''	102	4.01''	1/4" SAE (F/M)	0.467	212



## NCH-M\*F Dimensions

NCH-032F-M*F	1/4" Liquid Line Filter Drier
--------------	-------------------------------

The information contained herein is not intended to replace the full product installation and safety information available or the experience of a trained product installer. You are required to thoroughly read all installation instructions and product safety information before beginning the installation of a product.

All installations must completely comply with all NDL Industries warnings and instructions, national state and local codes and all applicable ANSI standards.

NDL Industries product specifications in U.S. customary units and metric are approximate and are provided for reference only. For precise measurements, please contact Customer

Service. NDL Industries reserves the right to change or modify product design, construction, specifications, or materials without prior notice and without incurring any obligation to make such changes and modifications on NDL products previously or subsequently sold.



Explore our full line of high-quality HVAC-R and plumbing products.

ndlinc.com | 1-866-635-6888 | sales@ndlinc.com

@ndlindustries



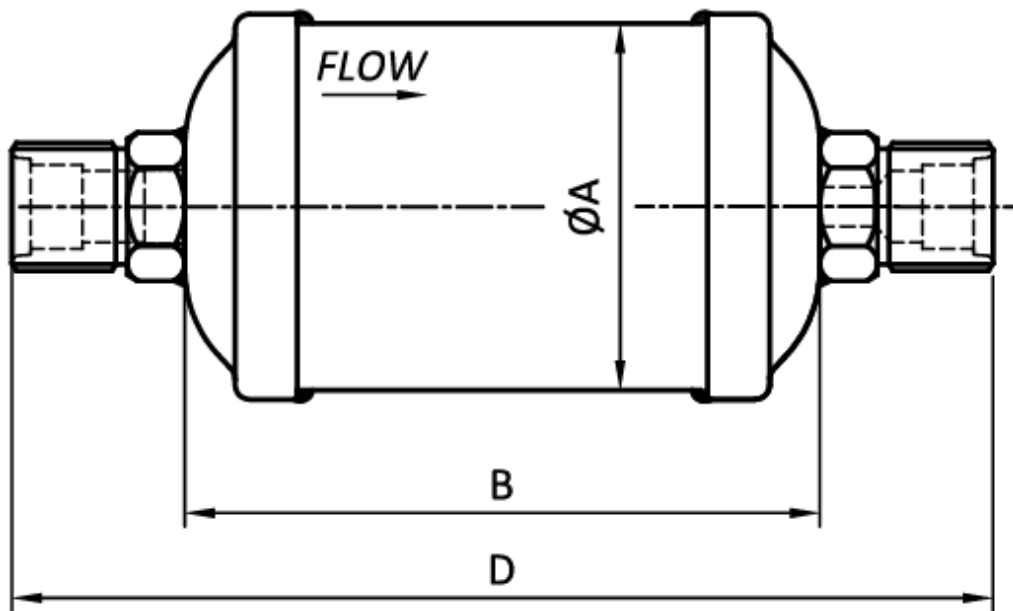




# Solid Core Liquid Line Filter Driers

## NCH-ORN Dimensions

PART #	OUTER DIA. $\varnothing A$		BODY LENGTH $B$		OVERALL LENGTH $D$		CONNECTION TYPE (IN)	WT (LB)	WT (G)
	MM	IN	MM	IN	MM	IN			
NCH-303 ORN	$\varnothing 76.2$	$\varnothing 3"$	190	7.48"	244	9.61"	3/8" O-Ring	3.373	1530



## NCH-ORN Dimensions

NCH-303 ORN	3/8" Liquid Line Filter Drier
-------------	-------------------------------

The information contained herein is not intended to replace the full product installation and safety information available or the experience of a trained product installer. You are required to thoroughly read all installation instructions and product safety information before beginning the installation of a product.

All installations must completely comply with all NDL Industries warnings and instructions, national state and local codes and all applicable ANSI standards.

NDL Industries product specifications in U.S. customary units and metric are approximate and are provided for reference only. For precise measurements, please contact Customer

Service. NDL Industries reserves the right to change or modify product design, construction, specifications, or materials without prior notice and without incurring any obligation to make such changes and modifications on NDL products previously or subsequently sold.



Explore our full line of high-quality HVAC-R and plumbing products.

ndlinc.com | 1-866-635-6888 | sales@ndlinc.com

@ndlindustries

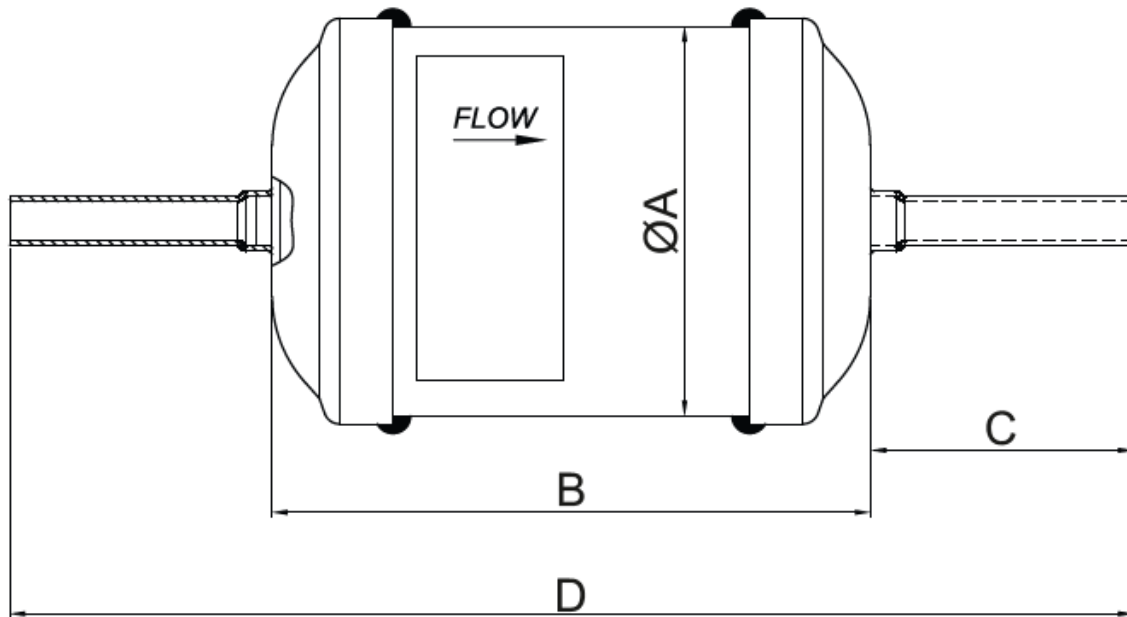




# Press Compatible Solid Core Liquid Line Filter Driers

## NCH-Z Dimensions

PART #	OUTER DIA. $\varnothing A$		BODY LENGTH B		STOPPER TO STOPPER LENGTH C		OVERALL LENGTH D		CONNECTION TYPE (IN)	WT (LB)	WT (G)
	MM	IN	MM	IN	MM	IN	MM	IN			
NCH-083-Z	$\varnothing 63.5$	$\varnothing 2.5$ "	99	3.89"	51.1	2.02"	202	7.95"	3/8" ODM	1.345	610.1
NCH-163-Z			122	4.8"			225	8.85"		1.627	738.0
NCH-164-Z			122	4.8"	52.5	2.06"	227	8.93"	1/2" ODM	1.609	729.8



## NCH-Z Dimensions

NCH-083-Z	3/8" Press Compatible Liquid Line Filter Drier
NCH-163-Z	3/8" Press Compatible Liquid Line Filter Drier
NCH-164-Z	1/2" Press Compatible Liquid Line Filter Drier

The information contained herein is not intended to replace the full product installation and safety information available or the experience of a trained product installer. You are required to thoroughly read all installation instructions and product safety information before beginning the installation of a product.

All installations must completely comply with all NDL Industries warnings and instructions, national state and local codes and all applicable ANSI standards.

NDL Industries product specifications in U.S. customary units and metric are approximate and are provided for reference only. For precise measurements, please contact Customer

Service. NDL Industries reserves the right to change or modify product design, construction, specifications, or materials without prior notice and without incurring any obligation to make such changes and modifications on NDL products previously or subsequently sold.



Explore our full line of high-quality HVAC-R and plumbing products.

ndlinc.com | 1-866-635-6888 | sales@ndlinc.com

@ndlindustries





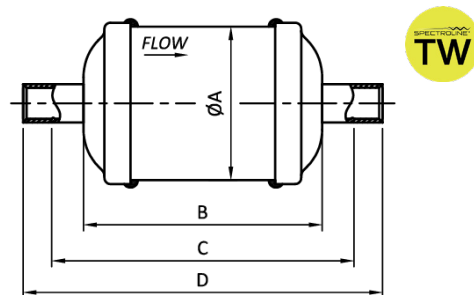
# Solid Core Liquid Line Filter Driers with TW

## NCH-S-TW Dimensions

PART #	OUTER DIA. ØA		BODY LENGTH B		STOPPER TO STOPPER LENGTH C		OVERALL LENGTH D		CONNECTION TYPE (IN)	WT (LB)	WT (G)
	MM	IN	MM	IN	MM	IN	MM	IN			
NCH-052S-TW	Ø 63.5	Ø 2.5"	78	3.07"	108	4.25"	128	5.04"	1/4" ODF	1.089	494.0
NCH-053S-TW									3/8" ODF	1.216	551.4
NCH-082S-TW			99	3.9"	129	5.08"	149	5.87"	1/4" ODF	1.401	635.6
NCH-083S-TW									3/8" ODF	1.360	617.0
NCH-084S-TW									1/2" ODF	1.401	635.6
NCH-163S-TW			122	4.8"	152	5.98"	172	6.77"	3/8" ODF	1.627	738.0
NCH-164S-TW									1/2" ODF	1.618	733.8
NCH-165S-TW									5/8" ODF	1.618	733.8

## NCH-S-TW Dimensions

NCH-052S-TW	1/4" Liquid Line Filter Drier with Tracer Wafer
NCH-053S-TW	3/8" Liquid Line Filter Drier with Tracer Wafer
NCH-082S-TW	1/4" Liquid Line Filter Drier with Tracer Wafer
NCH-083S-TW	3/8" Liquid Line Filter Drier with Tracer Wafer
NCH-084S-TW	1/2" Liquid Line Filter Drier with Tracer Wafer
NCH-163S-TW	3/8" Liquid Line Filter Drier with Tracer Wafer
NCH-164S-TW	1/2" Liquid Line Filter Drier with Tracer Wafer
NCH-165S-TW	5/8" Liquid Line Filter Drier with Tracer Wafer



The information contained herein is not intended to replace the full product installation and safety information available or the experience of a trained product installer. You are required to thoroughly read all installation instructions and product safety information before beginning the installation of a product.

All installations must completely comply with all NDL Industries warnings and instructions, national state and local codes and all applicable ANSI standards.

NDL Industries product specifications in U.S. customary units and metric are approximate and are provided for reference only. For precise measurements, please contact Customer.

Service. NDL Industries reserves the right to change or modify product design, construction, specifications, or materials without prior notice and without incurring any obligation to make such changes and modifications on NDL products previously or subsequently sold.



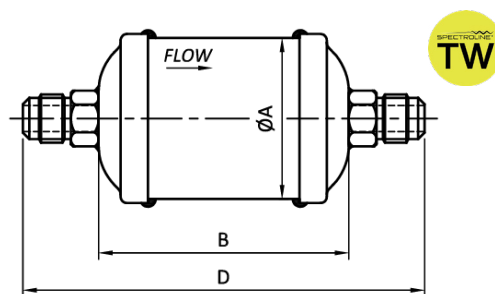
# Solid Core Liquid Line Filter Driers with TW

## NCH-F-TW Dimensions

PART #	OUTER DIA. ØA		BODY LENGTH B		OVERALL LENGTH D		CONNECTION TYPE (IN)	WT (LB)	WT (G)		
	MM	IN	MM	IN	MM	IN					
NCH-052F-TW	Ø 63.5	Ø 2.5"	78	3.07"	124	4.88"	1/4" SAE	1.216	551.4		
NCH-053F-TW					132	5.2"	3/8" SAE	1.216	551.4		
NCH-082F-TW			99	3.9"	145	5.71"	1/4" SAE	1.401	635.6		
NCH-083F-TW					153	6.02"	3/8" SAE	1.401	635.6		
NCH-084F-TW					159	6.26"	1/2" SAE	1.401	635.6		
NCH-163F-TW			Ø 76.2	Ø 3"	122	4.8"	176	6.93"	3/8" SAE	1.618	733.8
NCH-164F-TW							190	7.17"	1/2" SAE	1.618	733.8
NCH-165F-TW					148	7.48"	5/8" SAE	1.618	733.8		
NCH-303F-TW	244	9.61"			3/8" SAE	3.706	1681.0				
NCH-304F-TW	Ø 76.2	Ø 3"	190	7.48"	244	9.61"	1/2" SAE	3.706	1681.0		
NCH-305F-TW					258	10.16"	5/8" SAE	3.706	1681.0		
NCH-306F-TW					264	10.39"	3/4" SAE	3.706	1681.0		
NCH-414F-TW	Ø 88.9	Ø 3.5"	198	7.8"	258	10.16"	1/2" SAE	4.654	2111.2		
NCH-415F-TW					266	10.47"	5/8" SAE	4.654	2111.2		

## NCH-F-TW Dimensions

NCH-052F-TW	1/4" Liquid Line Filter Drier with Tracer Wafer
NCH-053F-TW	3/8" Liquid Line Filter Drier with Tracer Wafer
NCH-082F-TW	1/4" Liquid Line Filter Drier with Tracer Wafer
NCH-083F-TW	3/8" Liquid Line Filter Drier with Tracer Wafer
NCH-084F-TW	1/2" Liquid Line Filter Drier with Tracer Wafer
NCH-163F-TW	3/8" Liquid Line Filter Drier with Tracer Wafer
NCH-164F-TW	1/2" Liquid Line Filter Drier with Tracer Wafer
NCH-165F-TW	5/8" Liquid Line Filter Drier with Tracer Wafer
NCH-303F-TW	3/8" Liquid Line Filter Drier with Tracer Wafer
NCH-304F-TW	1/2" Liquid Line Filter Drier with Tracer Wafer
NCH-305F-TW	5/8" Liquid Line Filter Drier with Tracer Wafer
NCH-306F-TW	3/4" Liquid Line Filter Drier with Tracer Wafer
NCH-414F-TW	1/2" Liquid Line Filter Drier with Tracer Wafer
NCH-415F-TW	5/8" Liquid Line Filter Drier with Tracer Wafer



The information contained herein is not intended to replace the full product installation and safety information available or the experience of a trained product installer. You are required to thoroughly read all installation instructions and product safety information before beginning the installation of a product.

All installations must completely comply with all NDL Industries warnings and instructions, national state and local codes and all applicable ANSI standards.

NDL Industries product specifications in U.S. customary units and metric are approximate and are provided for reference only. For precise measurements, please contact Customer.

Service. NDL Industries reserves the right to change or modify product design, construction, specifications, or materials without prior notice and without incurring any obligation to make such changes and modifications on NDL products previously or subsequently sold.



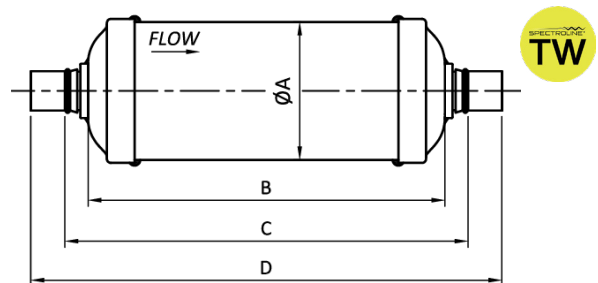
# Solid Core Liquid Line Filter Driers with TW

## NCH-S-TW Dimensions

PART #	OUTER DIA. ØA		BODY LENGTH B		STOPPER TO STOPPER LENGTH C		OVERALL LENGTH D		CONNECTION TYPE (IN)	WT (LB)	WT (G)
	MM	IN	MM	IN	MM	IN	MM	IN			
NCH-307S-TW	Ø 76.2	Ø 3"	190	7.48"	220	8.66"	264	10.39"	7/8" ODF	3.706	1681.0
NCH-309S-TW							274	10.79"	1-1/8" ODF	3.706	1681.0
NCH-417S-TW	Ø 88.9	Ø 3.5"	198	7.8"	228	8.98"	272	10.71"	7/8" ODF	4.654	2111.2
NCH-419S-TW							282	11.1"	1-1/8" ODF	4.654	2111.2

## NCH-S-TW Dimensions

NCH-307S-TW	7/8" Liquid Line Filter Drier with Tracer Wafer
NCH-309S-TW	7/8" Liquid Line Filter Drier with Tracer Wafer
NCH-417S-TW	7/8" Liquid Line Filter Drier with Tracer Wafer
NCH-419S-TW	7/8" Liquid Line Filter Drier with Tracer Wafer



The information contained herein is not intended to replace the full product installation and safety information available or the experience of a trained product installer. You are required to thoroughly read all installation instructions and product safety information before beginning the installation of a product.

All installations must completely comply with all NDL Industries warnings and instructions, national state and local codes and all applicable ANSI standards.

NDL Industries product specifications in U.S. customary units and metric are approximate and are provided for reference only. For precise measurements, please contact Customer.

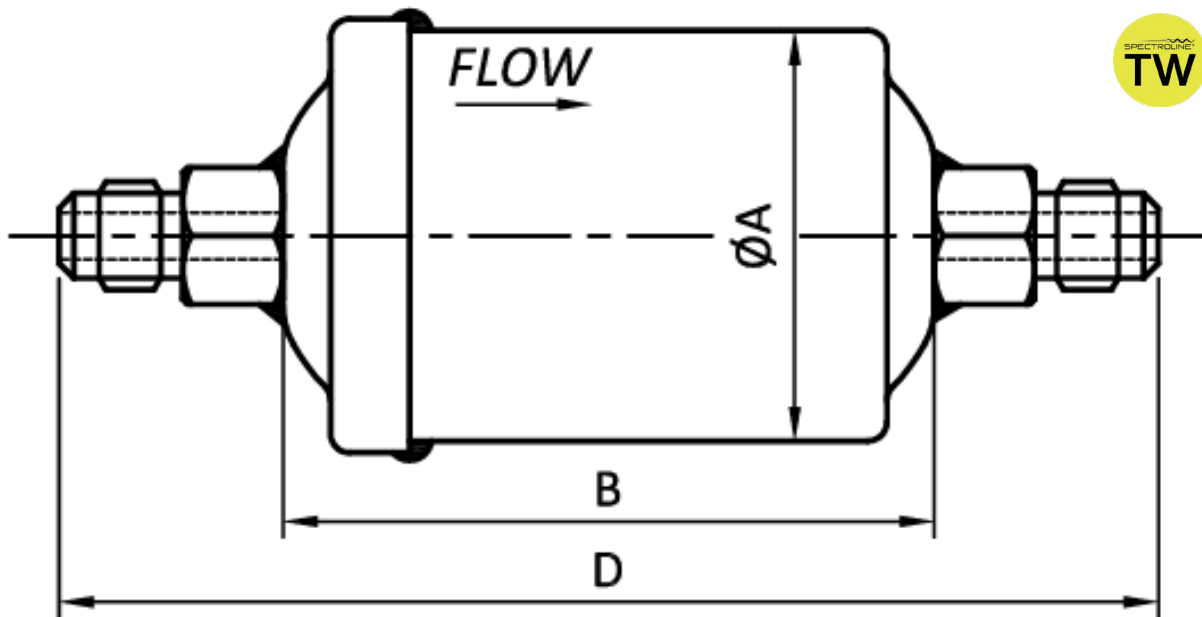
Service. NDL Industries reserves the right to change or modify product design, construction, specifications, or materials without prior notice and without incurring any obligation to make such changes and modifications on NDL products previously or subsequently sold.



# Solid Core Liquid Line Filter Driers with TW

## NCH-F-TW Dimensions

PART #	OUTER DIA. ØA		BODY LENGTH B		OVERALL LENGTH D		CONNECTION TYPE (IN)	WT (LB)	WT (G)
	MM	IN	MM	IN	MM	IN			
NCH-032F-TW	Ø 42	Ø 1.6"	67	2.64"	113	4.45"	1/4" SAE	0.468	212.2
NCH-033F-TW					121	4.76"			



## NCH-F-TW Dimensions

NCH-032F-TW	1/4" Liquid Line Filter Drier with Tracer Wafer
NCH-033F-TW	3/8" Liquid Line Filter Drier with Tracer Wafer

The information contained herein is not intended to replace the full product installation and safety information available or the experience of a trained product installer. You are required to thoroughly read all installation instructions and product safety information before beginning the installation of a product.

All installations must completely comply with all NDL Industries warnings and instructions, national state and local codes and all applicable ANSI standards.

NDL Industries product specifications in U.S. customary units and metric are approximate and are provided for reference only. For precise measurements, please contact Customer

Service. NDL Industries reserves the right to change or modify product design, construction, specifications, or materials without prior notice and without incurring any obligation to make such changes and modifications on NDL products previously or subsequently sold.



Explore our full line of high-quality HVAC-R and plumbing products.

ndlinc.com | 1-866-635-6888 | sales@ndlinc.com

@ndlindustries

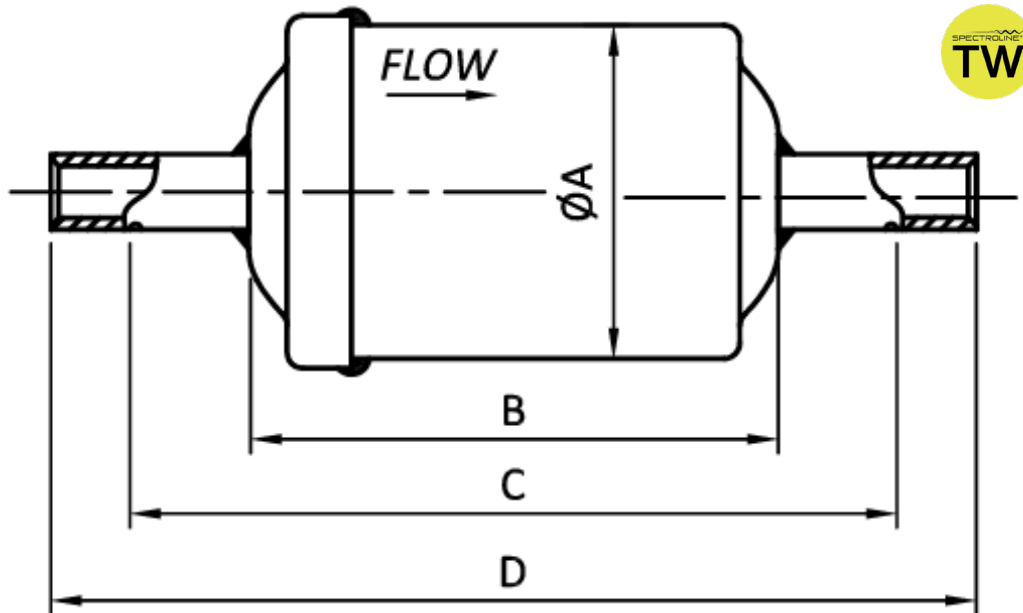




# Solid Core Liquid Line Filter Driers with TW

## NCH-S-TW Dimensions

PART #	OUTER DIA. ØA		BODY LENGTH B		STOPPER TO STOPPER LENGTH C		OVERALL LENGTH D		CONNECTION TYPE (IN)	WT (LB)	WT (G)
	MM	IN	MM	IN	MM	IN	MM	IN			
NCH-032S-TW	Ø 42	Ø 1.6"	67	2.64"	97"	3.82"	117	4.61"	1/4" ODF	0.452	205.0
NCH-033S-TW									3/8" ODF	0.461	209.0



## NCH-S-TW Dimensions

NCH-032S-TW	1/4" Liquid Line Filter Drier with Tracer Wafer
NCH-033S-TW	3/8" Liquid Line Filter Drier with Tracer Wafer

The information contained herein is not intended to replace the full product installation and safety information available or the experience of a trained product installer. You are required to thoroughly read all installation instructions and product safety information before beginning the installation of a product.

All installations must completely comply with all NDL Industries warnings and instructions, national state and local codes and all applicable ANSI standards.

NDL Industries product specifications in U.S. customary units and metric are approximate and are provided for reference only. For precise measurements, please contact Customer

Service. NDL Industries reserves the right to change or modify product design, construction, specifications, or materials without prior notice and without incurring any obligation to make such changes and modifications on NDL products previously or subsequently sold.



Explore our full line of high-quality HVAC-R and plumbing products.

ndlinc.com | 1-866-635-6888 | sales@ndlinc.com

@ndlindustries

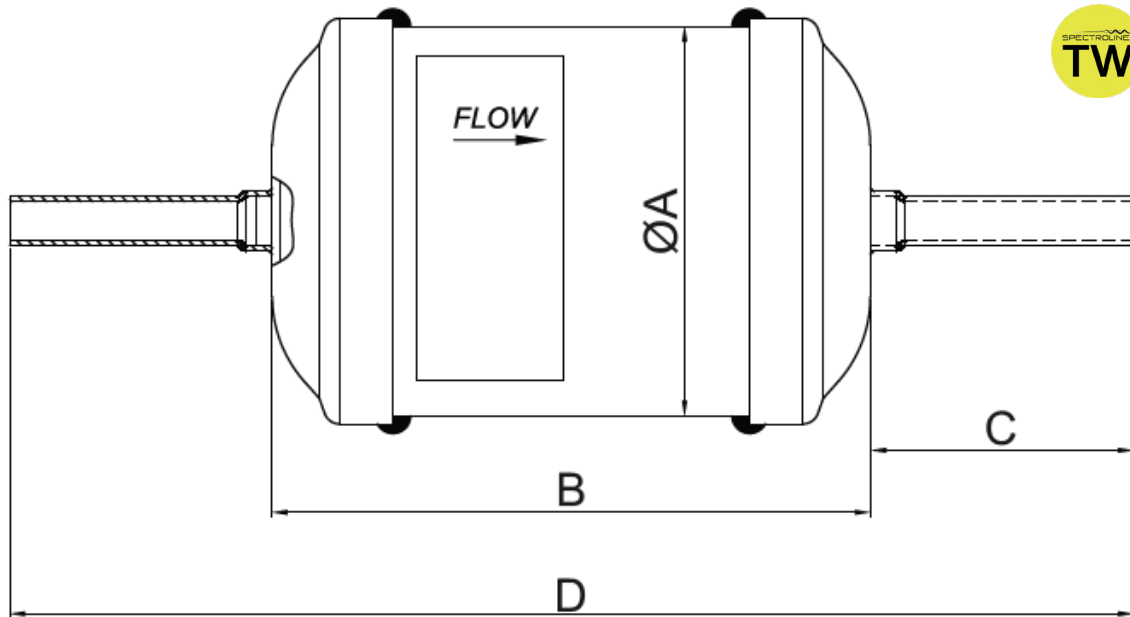




# Press Compatible Solid Core Liquid Line Filter Driers with TW

## NCH-Z-TW Dimensions

PART #	OUTER DIA. ØA		BODY LENGTH B		STOPPER TO STOPPER LENGTH C		OVERALL LENGTH D		CONNECTION TYPE (IN)	WT (LB)	WT (G)
	MM	IN	MM	IN	MM	IN	MM	IN			
NCH-083-Z-TW	Ø 63.5	Ø 2.5"	99	3.89"	51.1	2.02"	202	7.95"	3/8" ODM	1.345	610.1
NCH-163-Z-TW			122	4.8"			225	8.85"		1.627	738.0
NCH-164-Z-TW			52.5	2.06"	227	8.93"	1/2" ODM	1.609	729.8		



## NCH-Z-TW Dimensions

NCH-083-Z-TW	3/8" Press Compatible Liquid Line Filter Drier with Tracer Wafer
NCH-163-Z-TW	3/8" Press Compatible Liquid Line Filter Drier with Tracer Wafer
NCH-164-Z-TW	1/2" Press Compatible Liquid Line Filter Drier with Tracer Wafer

The information contained herein is not intended to replace the full product installation and safety information available or the experience of a trained product installer. You are required to thoroughly read all installation instructions and product safety information before beginning the installation of a product.

All installations must completely comply with all NDL Industries warnings and instructions, national state and local codes and all applicable ANSI standards.

NDL Industries product specifications in U.S. customary units and metric are approximate and are provided for reference only. For precise measurements, please contact Customer

Service. NDL Industries reserves the right to change or modify product design, construction, specifications, or materials without prior notice and without incurring any obligation to make such changes and modifications on NDL products previously or subsequently sold.



Explore our full line of high-quality HVAC-R and plumbing products.

ndlinc.com | 1-866-635-6888 | sales@ndlinc.com

@ndlindustries

