

TECHNICAL SPECIFICATIONS SUBMITTAL FORM

Job Name:	Submittal Date:	Wholesaler:
Job Location:	Engineer/Architect:	Contractor:

Product Use:

Sight Glasses for use in HVAC, and Refrigeration Applications.

Design and Features:

- Wide range of connection types that are designed for seamless integration within refrigeration system piping.
- Featuring robust and durable connection, they provide clear monitoring of refrigerant levels, oil condition, and potential contaminants.
- Equipped with moisture indicators, they offer quick and accurate detection.
- Helps to prevent system issues that could arise from faulty installations.
- Compatible with CFC, HFO, FCFC, HFC refrigerant and oils.

Certifications and Approvals:

- UL/cUL207 Recognized
- Solder ends comply with ANSI B16.18
- Threaded ends comply with UNF standard

Correlation between water cut and color

REFRIGERANT	LIQUID TEMPERATURE 25°C			LIQUID TEMPERATURE 43°C		
	GREEN/DRY	MEDIUM COLOR	YELLOW/WET	GREEN/DRY	MEDIUM COLOR	YELLOW/WET
R22/R502	<30	30-120	>120	<50	50-200	>200
R134A	<30	30-100	>100	<45	45-170	>170
R404A	<20	20-70	>70	<25	25-100	>100
R407C	<30	30-140	>140	<60	60-225	>225
R507	<15	15-60	>60	<30	30-110	>110



Operating Specifications:

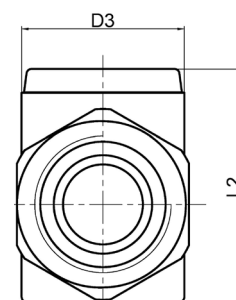
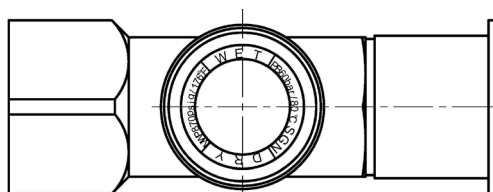
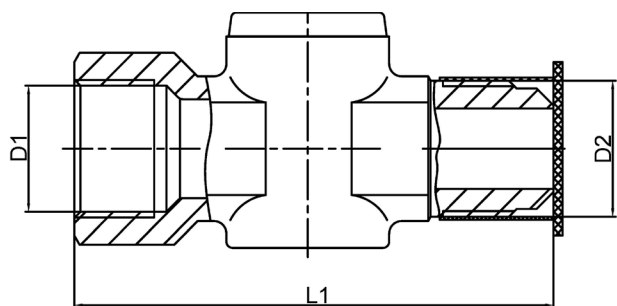
- Continuous operating temperature (COT): -40°F / 176°F, -40°C / 80°C
- Maximum working pressure: 870PSI
- Threaded ends comply with UNF standards
- Compatible with CFC, HFO, HCFC, HFC refrigerants and oils
- 100% helium leakage tested
- Forged brass body



Sight Glasses (M x F Flare)

NG-MF Dimensions and Product Selection

PART #	OD - DESCRIPTION	D1 (IN)	D2 (IN)	D3 (IN)	L1 (IN)	L2 (IN)	WT (LB)	WT (G)	MAX. WORKING PRESSURE
									PSI
NG-1/4-MF	1/2" Sight Glass	7/16-20UNF	7/16-20UNF	1.043	2.362	0.984	0.218	98.9	870
NG-3/8-MF	3/8" Sight Glass	5/8-18UNF	5/8-18UNF	1.043	2.677	1.240	0.339	153.8	870
NG-1/2-MF	1/2" Sight Glass	3/4-16UNF	3/4-16UNF	1.043	2.756	1.358	0.399	181.0	870
NG-5/8-MF	5/8" Sight Glass	7/8-14UNF	7/8-14UNF	1.043	3.071	1.496	0.485	220.0	870



The information contained herein is not intended to replace the full product installation and safety information available or the experience of a trained product installer. You are required to thoroughly read all installation instructions and product safety information before beginning the installation of a product.

All installations must completely comply with all NDL Industries warnings and instructions, national state and local codes and all applicable ANSI standards.

NDL Industries product specifications in U.S. customary units and metric are approximate and are provided for reference only. For precise measurements, please contact Customer Service. NDL Industries reserves the right to change or modify product design, construction, specifications, or materials without prior notice and without incurring any obligation to make such changes and modifications on NDL products previously or subsequently sold.



Explore our full line of high-quality HVAC-R and plumbing products.

ndlinc.com | 1-866-635-6888 | sales@ndlinc.com

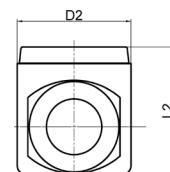
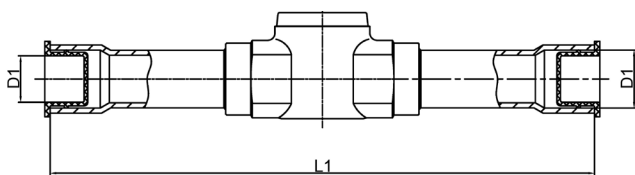
@ndlindustries



NDL Sight Glasses (ODF)

NGN-S correlation between water cut and color

PART #	OD - DESCRIPTION	D1 (IN)	D2 (IN)	L1 (IN)	L2 (IN)	WT (LB)	WT (G)	MAX. WORKING PRESSURE
								PSI
NGN-1/4-S	1/4" Sight Glass	0.252	1.043	4.016	0.850	0.176	79.8	870
NGN-3/8-S	3/8" Sight Glass	0.377	1.043	4.685	0.902	0.216	98.0	870
NGN-1/2-S	1/2" Sight Glass	0.502	1.043	5.748	1.043	0.324	147.0	870
NGN-5/8-S	5/8" Sight Glass	0.627	1.043	5.984	1.161	0.410	186.0	870
NGN-3/4-S	3/4" Sight Glass	0.752	1.043	6.575	1.319	0.591	268.1	870
NGN-7/8-S	7/8" Sight Glass	0.877	1.240	6.811	1.535	0.772	350.2	790
NGN-1-1/8-S	1-1/8" Sight Glass	1.128	1.417	8.504	1.764	1.180	535.2	725



The information contained herein is not intended to replace the full product installation and safety information available or the experience of a trained product installer. You are required to thoroughly read all installation instructions and product safety information before beginning the installation of a product.

All installations must completely comply with all NDL Industries warnings and instructions, national state and local codes and all applicable ANSI standards.

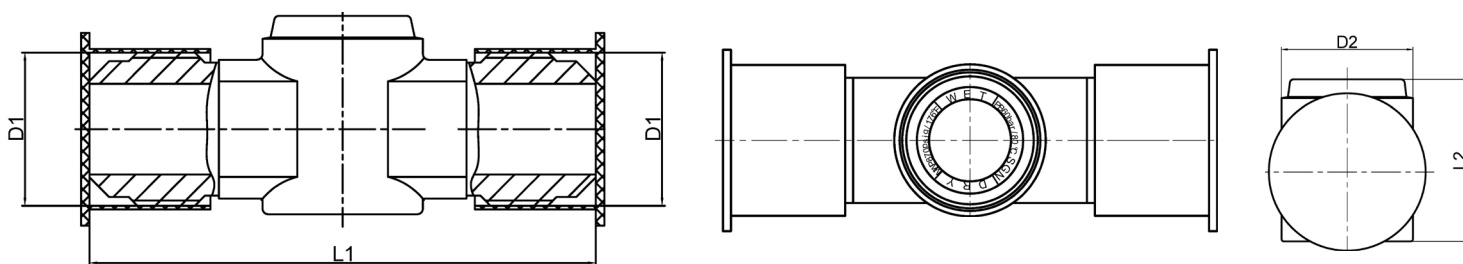
NDL Industries product specifications in U.S. customary units and metric are approximate and are provided for reference only. For precise measurements, please contact Customer Service. NDL Industries reserves the right to change or modify product design, construction, specifications, or materials without prior notice and without incurring any obligation to make such changes and modifications on NDL products previously or subsequently sold.



Sight Glass (SAE)

NGN-F Dimensions and Product Selection

PART #	OD - DESCRIPTION	D1 (IN)	D2 (IN)	L1 (IN)	L2 (IN)	WT (LB)	WT (G)	MAX. WORKING PRESSURE
								PSI
NGN-1/4-F	1/4" Sight Glass	7/16-20UNF	1.043	2.520	0.850	0.176	79.8	870
NGN-3/8-F	3/8" Sight Glass	5/8-18UNF	1.043	2.756	0.984	0.216	98.0	870
NGN-1/2-F	1/2" Sight Glass	3/4-16UNF	1.043	2.953	1.043	0.32	145.1	870
NGN-5/8-F	5/8" Sight Glass	7/8-14UNF	1.043	3.150	1.161	0.406	184.2	870
NGN-3/4-F	3/4" Sight Glass	1-1/16-14UNF	1.122	3.543	1.378	0.584	264.9	870



The information contained herein is not intended to replace the full product installation and safety information available or the experience of a trained product installer. You are required to thoroughly read all installation instructions and product safety information before beginning the installation of a product.

All installations must completely comply with all NDL Industries warnings and instructions, national state and local codes and all applicable ANSI standards.

NDL Industries product specifications in U.S. customary units and metric are approximate and are provided for reference only. For precise measurements, please contact Customer Service. NDL Industries reserves the right to change or modify product design, construction, specifications, or materials without prior notice and without incurring any obligation to make such changes and modifications on NDL products previously or subsequently sold.



Explore our full line of high-quality HVAC-R and plumbing products.

ndlinc.com | 1-866-635-6888 | sales@ndlinc.com

@ndlindustries

