



NDL Industries

**APPLICATIONS**Commercial, Industrial, and Residential CO<sub>2</sub> Refrigeration

# C194 Copper Ball Valves (CO<sub>2</sub>-C)

NDL CO<sub>2</sub> ball valves perform unlike any other in its class for leak prevention, reliability, and superior field performance.



## CO<sub>2</sub>-C Specifications

**Exceptional Safety Margins**

Our valves can hold five times their maximum working pressure, netting a tremendous safety margin for any ball valve used in CO<sub>2</sub> systems.

**Quality Tested**

Each valve is helium tested at the factory to guarantee leak-free performance.

**Bottom-Up Stem Installation**

Our stem placement is engineered from the bottom up. If there is an accidental over-pressurization in the valve, it will not blow the stem out and lose the charge.

**Stainless Steel Body**

The NDL CO<sub>2</sub> valves feature a stainless steel body for stainless steel and copper-alloy connections.

**Size and Connections**

A wide range of sizes and connection types makes our valves compatible with main pipe types manufactured from copper iron alloys and stainless steel.

**Unparalleled Two-year Warranty**

Our warranty proves confidence, along with stamping every valve with a serial number and cleanly packaging in a poly-bag to prevent contamination and malfunctions.



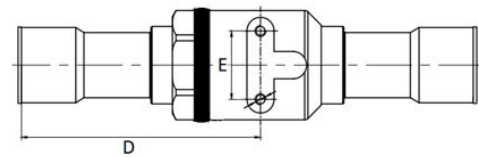
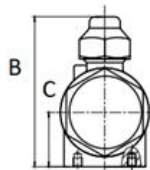
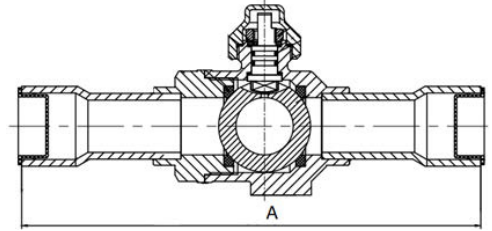
# C194 Copper Ball Valves

## Operating Specifications

- Temperature: -40° to 302°F (-40°C to 150°C)
- Burst Pressure: 5 times the working pressure
- Life Expectancy: >50,000 cycles

## Certifications and Approvals

- CE
- RoHS
- CRN approved



## CO<sub>2</sub>-C Sizes, Kv/Cv, and Pressure Ratings

PART NUMBER	CONNECTION ODS		BALL PORT SIZE		MAX. OPERATING PRESSURE	
	IN	MM	M3/H	GPM	BAR	PSI
CO2-02C	1/4"	10	0.8	0.9	140	2030
CO2-03C	3/8"	10	3	3.5	140	2030
CO2-04C	1/2"	10	5	5.8	140	2030
CO2-05C	5/8"	14	17	19.7	140	2030
CO2-06C	3/4"	18	17	19.7	140	2030
CO2-07C	7/8"	19	29	33.5	140	2030
CO2-09C	1-1/8"	25	51	59.0	140	2030
CO2-11C	1-3/8"	31	81	93.6	140	2030
CO2-13C	1-5/8"	37	105	121.4	120	1740
CO2-17C	2-1/8"	50	214	247.4	120	1740